

# ALUMINIUM ROLLER SHUTTERS

FOR SPECIAL VEHICLES



**SRS**  
ROLLER SHUTTERS



# 02

## SRS TOP

SRS *TOP*  
SRS *TOP READY*  
SRS *TOP XL*

### Order form

SRS TOP - TOP READY - TOP XL



The **SRS TOP roller shutter** series is designed for installation on a wide range of firefighting, emergency response, industrial, and special-purpose vehicles.

Thanks to a **compact and efficient rolling system**, SRS TOP series shutters provide an ideal alternative to traditional hinged doors, offering **improved accessibility** and optimized use of available space.

These medium-to-large aluminium roller shutters are equipped with a **Ø45 mm** or **Ø60 mm** winding roll, selected according to the shutter dimensions and specific application requirements, ensuring **reliable performance and smooth operation** even in demanding environments.



5.5 bar

  
BAI

# SRS TOP

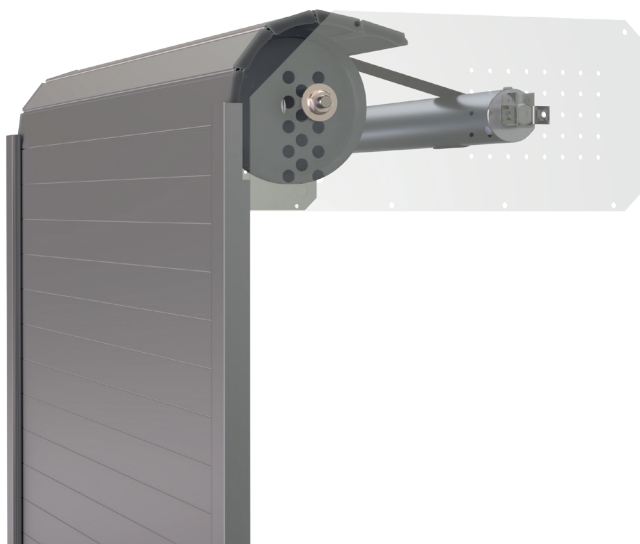
**Versatile, space-saving solutions for emergency, firefighting, and special vehicles.**

The **SRS TOP aluminium roller shutter** is assembled using **extruded aluminium profiles H30, H35, or H38**, with customizable height and width to meet specific project requirements. Special configurations are also available on request.

Designed to meet the dimensional and operational needs of vehicle body builders, the system ensures **intuitive assembly and quick installation**, making it particularly suitable for professional vehicle equipment applications.

Each **SRS TOP** roller shutter is supplied in separate components to allow simple and fast on-site assembly:

- 1 pre-assembled shutter complete with closing system (with or without lock), profile with fixing straps for connection to the winding roll
- 1 pair of vertical side guides
- 1 pre-tensioned Ø45 mm winding roll
- 1 accessory kit with mounting screws and hardware
- Additional options available on request



## RECOMMENDED DIMENSIONS

**2200** mm

MAX. WIDTH

**2200** mm

MAX. HEIGHT

**4,5** mm<sup>2</sup>

MAX. SURFACE AREA

## SHUTTER WEIGHT FOR m<sup>2</sup>

(based on profile type):

**14** Kg (approx.)

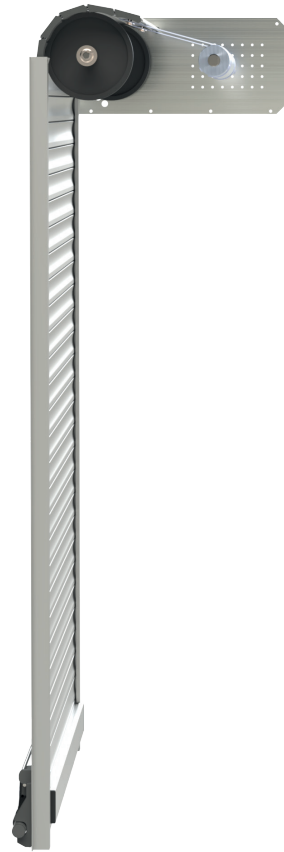
H30 PROFILE

**13** Kg (approx.)

H35 PROFILE

**12** Kg (approx.)

H38 PROFILE



# SRS TOP READY

## Pre-assembled solution for fast and efficient installation

The **SRS TOP READY** model is a **fully pre-assembled aluminium roller shutter**, designed for installation in the main compartments of emergency, special-purpose, and industrial vehicles.

It provides a **compact and highly functional alternative** to traditional hinged doors, particularly suitable for applications where fast access and space optimization are essential.

Manufactured using high-quality extruded aluminum profiles (**H30** or **H38**), each shutter is custom-built according to the compartment height and the specific application requirements of the customer, ensuring **perfect integration with the vehicle structure**.

Each **SRS TOP READY** roller shutter is delivered as a fully pre-assembled kit, ready for installation, and includes:

- 1 pre-assembled roller shutter integrated into the kit and complete with:
  - 1 Closing system (with or without key)
  - 1 Ø45 mm pre-tensioned winding roll, mounted to the shutter
  - 2 fixing plates assembled with 3 corner brackets forming the structural frame of the kit
  - 2 sets of sliding wheels, pre-installed within the kit
  - 1 pair of vertical side guides
- 1 box containing mounting accessories and fastening hardware
- Additional options available on request

## RECOMMENDED DIMENSIONS

2200 mm

MAX. WIDTH

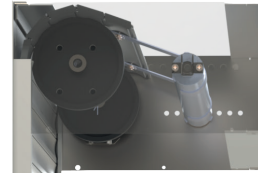
1900 mm

MAX. HEIGHT

4 mm<sup>2</sup>

MAX. SURFACE AREA





# SRS TOP XL

## Robust and heavy-duty solution for large compartments

The **SRS TOP XL** model is specifically designed for **large compartment openings**, providing a reinforced structure and high performance.

Ideal for commercial and logistic vehicles, it represents a reliable and functional alternative to traditional hinged doors, particularly for applications with openings of up to 7 m<sup>2</sup>.

Equipped with an oversized Ø60 mm winding roll and closing system, the SRS TOP XL model ensures **smooth operation, long-term durability**, and **superior structural stability**, even in demanding working conditions.

The **SRS TOP XL** aluminium roller shutter is manufactured using high-strength extruded aluminium H38 profiles, and is custom-built according to the compartment dimensions and the specific technical requirements of the customer.

Each **SRS TOP XL** roller shutter is supplied in separate components to allow simple and fast on-site assembly:

- 1 pre-assembled shutter complete with closing system (with or without lock), profile with fixing straps for connection to the winding roll
- 1 pair of vertical side guides
- 1 pre-tensioned Ø60 mm winding roll
- 1 accessory kit with mounting screws and hardware
- Additional options available on request

This configuration allows for **efficient on-site assembly** and **seamless integration** into large vehicle compartments.

## RECOMMENDED DIMENSIONS

2900 mm

MAX. WIDTH

2500 mm

MAX. HEIGHT

1000 mm

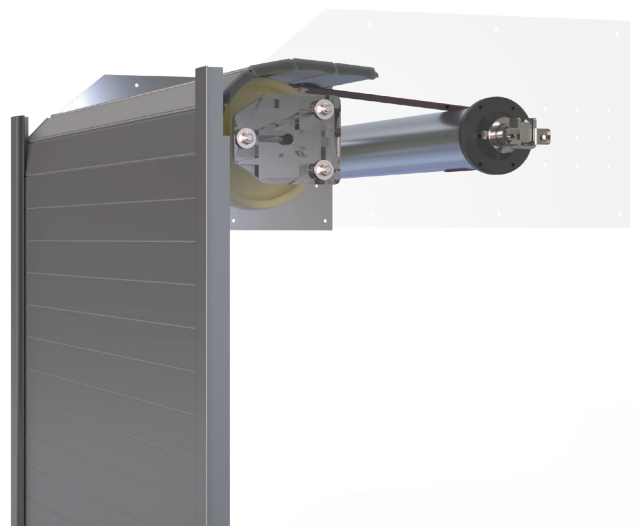
MIN. WIDTH

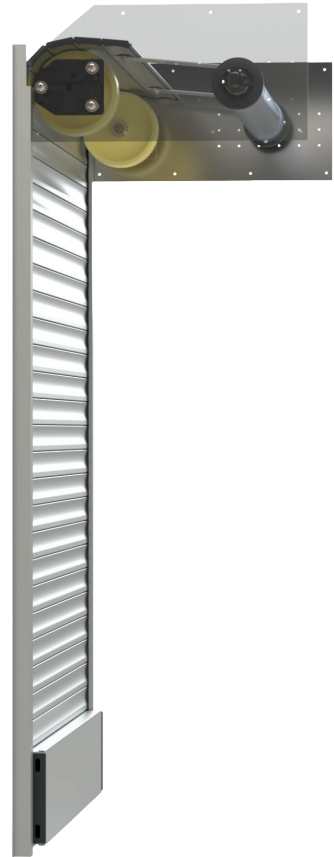
7 m<sup>2</sup>

MAX. RECOMMENDED SURFACE AREA

H38 12 kg/m<sup>2</sup>

WEIGHT: SAME AS STANDARD TOP MODEL





# FINISHING

## Description

Made from **high-quality extruded aluminium**, the profiles used in SRS roller shutters feature an optimized cross-section to ensure **superior mechanical performance**.

Available in standard satin silver anodized finish or RAL 7035 powder coating, both providing **outstanding corrosion resistance and durability over time**. Profile heights range from 30 mm to 38 mm, depending on installation requirements.

Upon request, powder coating can be applied in over 150 RAL colors for **fully customized applications**.



# GUIDES

**Several guide profiles are available, optimized according to the SRS shutter model**

Seven different guide profiles are available, each specifically designed and optimized for the various SRS roller shutter models. Every guide profile is engineered to ensure:

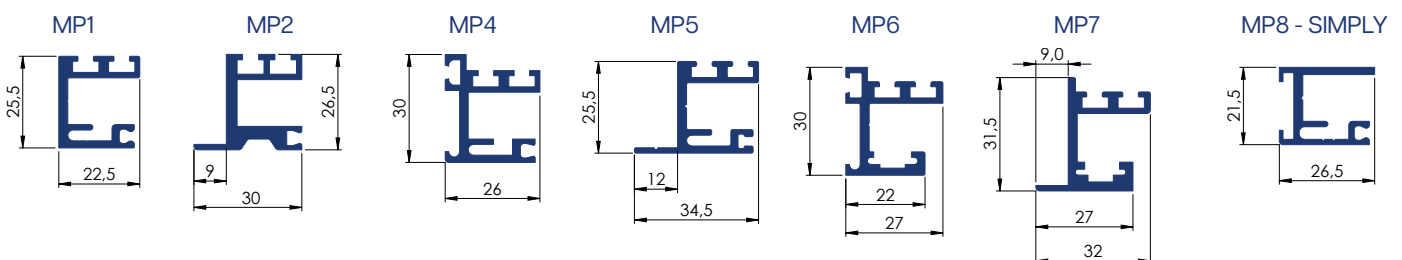
- Smooth and reliable shutter movement
- Optimal sealing, thanks to one or two integrated rubber gaskets
- Full compatibility with dedicated accessories and locking systems

Guide profiles can also be supplied pre-machined, including milled or curved versions, to meet **specific installation or design requirements.**

This wide range of guide profiles allows the SRS system to adapt to different installation configurations while maintaining **high levels of performance, reliability, and durability.**



	MP1	MP2	MP4	MP5	MP6	MP7	SIMPLY
TOP	[Profile bar with MP1, MP2, MP4, MP5, MP6, MP7 highlighted]						
TOP READY	[Profile bar with MP1, MP5 highlighted]						
TOP XL	[Profile bar with MP1, MP2, MP4, MP5 highlighted]						
TOP E	[Profile bar with MP1, MP2, MP4, MP5 highlighted]						
ECO	[Profile bar with MP1, MP2, MP4, MP5 highlighted]						
ECO PLUS	[Profile bar with MP1, MP2, MP4, MP5 highlighted]						
ECO SIMPLY	[Profile bar with SIMPLY highlighted]						
ECO PLUS SIMPLY	[Profile bar with SIMPLY highlighted]						



# CLOSING SYSTEMS

**SRS roller shutters** are equipped with a range of locking systems selected according to the shutter model to ensure **optimal performance**.

Available in both key-operated and keyless versions, they are manufactured from high-strength extruded aluminium, combined with metal components and engineered plastics, ensuring an excellent balance of **robustness, reliability, and long service life**.

All systems feature an **automatic locking function**: the shutter securely locks when fully lowered, enhancing ease of use and overall safety.

	T1	T2	T3	T4	T5	T8	T9
TOP	—	—	—	—	—	—	—
TOP READY	—	—	—	—	—	—	—
TOP XL	—	—	—	—	—	—	—
TOP E	—	—	—	—	—	—	—
ECO	—	—	—	—	—	—	—
ECO PLUS	—	—	—	—	—	—	—
ECO SIMPLY	—	—	—	—	—	—	—
ECO PLUS SIMPLY	—	—	—	—	—	—	—



T1



T2



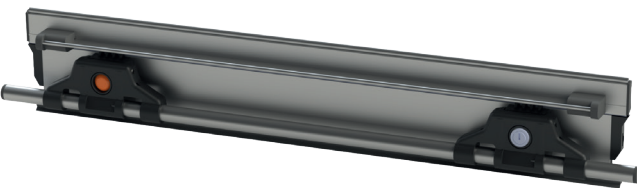
T3



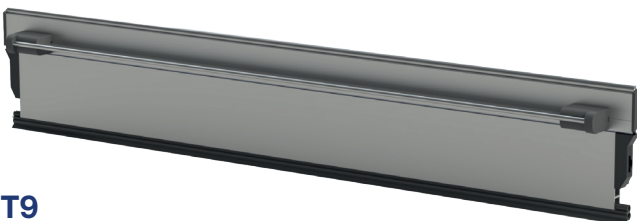
T4



T5



T8



T9



# WINDING ROLLS

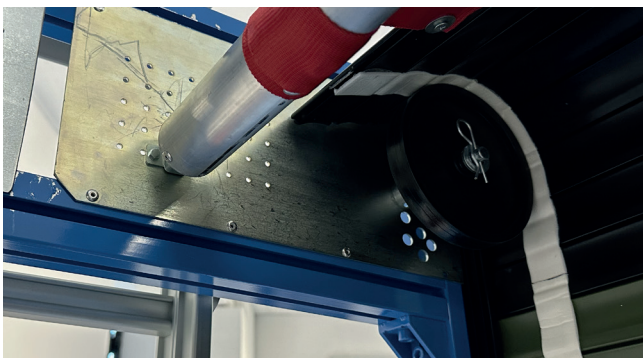
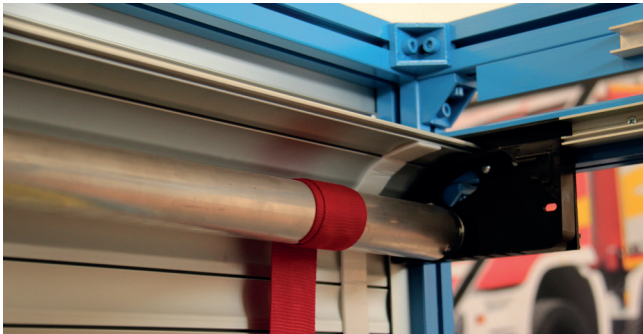
## Aluminium rolls – Ø45 mm and Ø60 mm

Winding rolls are available in Ø45 mm and Ø60 mm diameters, to suit different space, configuration, and load requirements.

Both versions are equipped with **pre-tensioned steel springs**, designed to ensure **high mechanical strength and consistent performance over time**.

### The Ø45 mm roll

Typically used for TOP shutters, is among the **most compact solutions available on the market**. It significantly reduces the overall size of the shutter when rolled up, making it ideal for **installations with limited space**.



### The Ø60 mm roll

Designed for TOP XL shutters with higher weight, ensures **optimal winding performance** even for large dimensions, providing **stability, reliability, and long-lasting operation**.



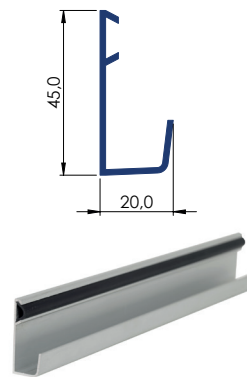
# ACCESSORIES

Accessories are a key element in completing and enhancing aluminium roller shutters, improving their **functionality, security, and long-term durability**. This section presents a range of solutions designed to meet a variety of application needs, ensuring **reliability**, ease of use, and seamless integration with every system.

## Gutter profiles

Aluminium gutter profiles, available in two sizes, guide the shutter smoothly during operation while **optimising water drainage**. Installed at the top of the compartment, they direct water away from the shutter, preventing leaks and potential damage. The profiles are fixed with screws or rivets in a dedicated groove, hidden by a seal (big gutter profile), **uniform finish**, and are available in different colour options to match the installation.

Big gutter profile



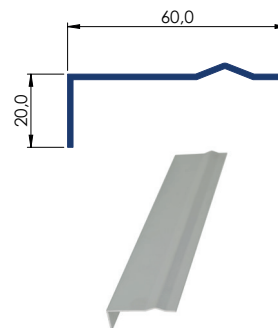
Small gutter profile



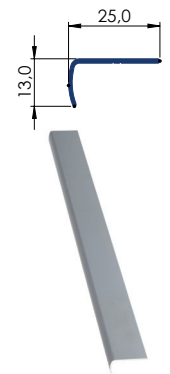
## Lower profiles

The aluminium lower profile, available in two sizes, supports the shutter when closed, ensures **proper sealing against dust and water**, protects the bottom edge from wear, and provides a **clean, durable finish**. Available in different colour options.

Big lower profile



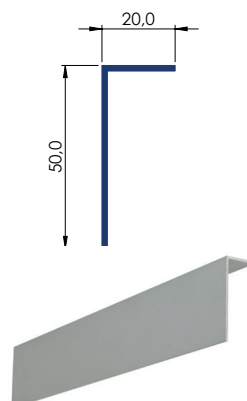
Small lower profile



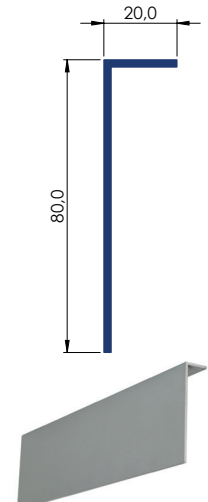
## Covers

Protective profiles that protect mechanical components and shutter profiles from **dust, dirt, and moisture**, while providing a **clean, finished appearance** for a durable and tidy installation.

Cover 50x20



Cover 80x20



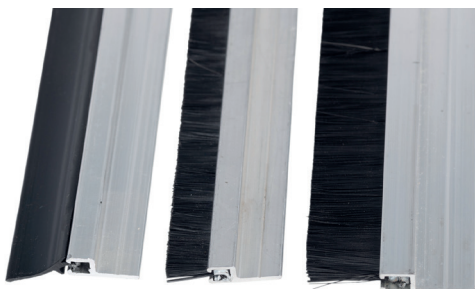
### Milled shutter profile with gasket

Milled shutter profile with **integrated gasket**, designed to provide **effective protection against dust, air, and water**.



### Aluminium profile with brush

Aluminium profile with **integrated brush or rubber gasket**, mounted at the top of the shutter. It cleans dust and debris during operation, ensuring **smooth movement** and protecting the shutter profiles.



### Pulling Belt

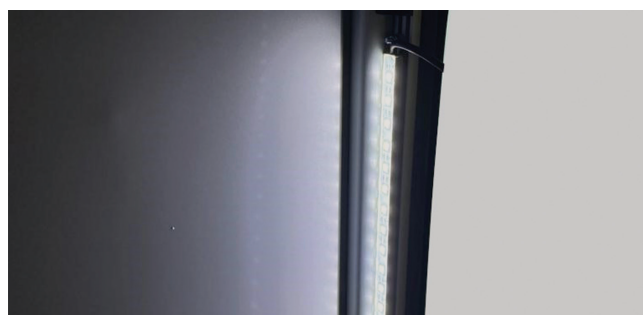
The pulling belt, available in standard or elastic versions, is an **essential accessory** for aluminium shutters installed at high elevations. It allows the shutter to be operated without directly reaching the closing system or grip profile, ensuring **safe and convenient closing**.



### Inside LED

12V or 24V **LED** ideal for installation on the side guides. It provides **uniform illumination with low energy consumption**, enhancing visibility and safety during shutter operation.

Measures	S300	S500	S1000
LED quantity	18	30	60
Body	Aluminium	Aluminium	Aluminium
Lens size	500	500	1000
Lens coated	Silicon	Silicon	Silicon
Color intensity	6000K	6000K	6000K



### External LED

12v or 24v LED used to illuminate the external and perimeter area. It is supplied in anodized aluminium profile, polycarbonate cover, plastic end caps, mounting clips and rivets.

- **Color intensity:** 6000k ;
- **Operating temperature:** -25°C ~ +40°C ;
- **Max temperature:** 75°C Max
- **Lifetime:** 60,000 h ;
- **IP Rating:** IP65

**Dimensions Section:** 19 × 19 mm

**Max length:** 3000 mm

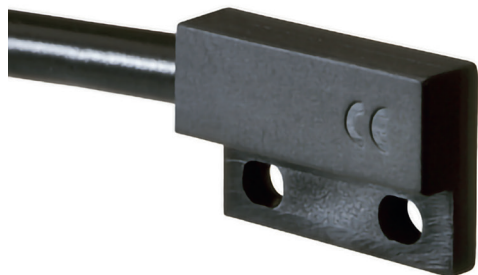
(L 700 mm: Ws < 1000 mm) (L 1000 mm: Ws 1001 – 1299 mm) (L 1300 mm: Ws 1300 – 1600 mm)

Custom sizes available on request  
Ws = shutter opening width



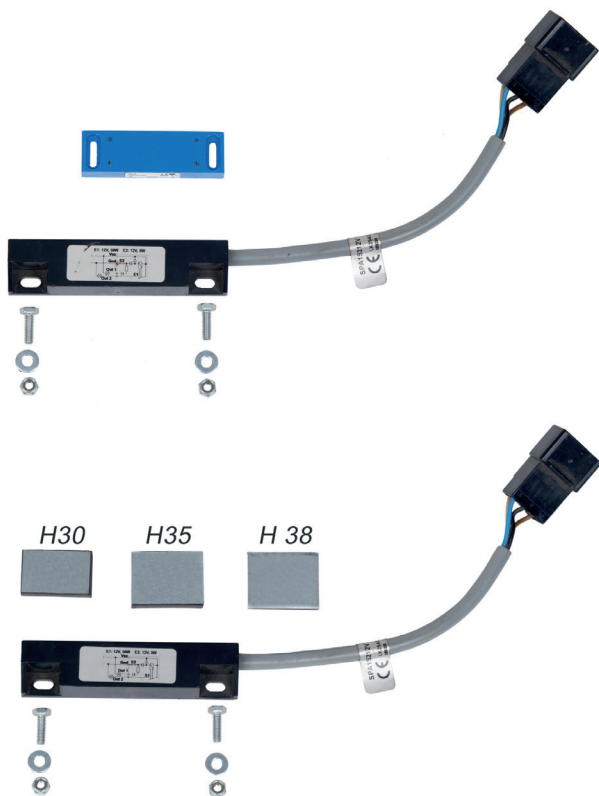
## Proximity magnetic sensor 612

Proximity magnetic sensor featuring microminiature Reed contacts; the output function can be normally closed (NC) or normally open (NO). A very **compact sensor**, designed with **highly sensitive contacts and low hysteresis**. Available in 12V or 24V.



## Proximity magnetic sensor

Proximity magnetic sensor with a rectangular plastic housing, featuring a normally closed (NC) output. Available with **high-power** output for direct control and **low-power** output for signal applications, ensuring **reliable and versatile performance** across different uses. Available in 12V or 24V.



## Electric Locking System 12/24 V

System designed to **automatically lock and unlock roller shutters** without the need for a manual key, featuring electrical control and vehicle integration.

### Functions

- Electric locking and unlocking
- Automatic hold in open position
- Control via remote transmitter or RFID technology
- Integration with vehicle central locking system
- Status indication via LED

### Available Versions

#### Horizontal Kit

- 5-wire actuator 12/24V
- Central mounting bracket + cross bar (only on upper part)
- Dedicated shutter profile
- Recommended for shutters up to 1200 mm width



#### Vertical Side Kit

- 5-wire actuator 12/24V
- Side bracket (RH or LH)
- Dedicated shutter profile
- Recommended for shutters over 1200 mm (double kit suggested)



### Control

- Control unit with 1 or 2 TXSP4 remote transmitters
- Control unit with RFID touch control (complete wiring included)

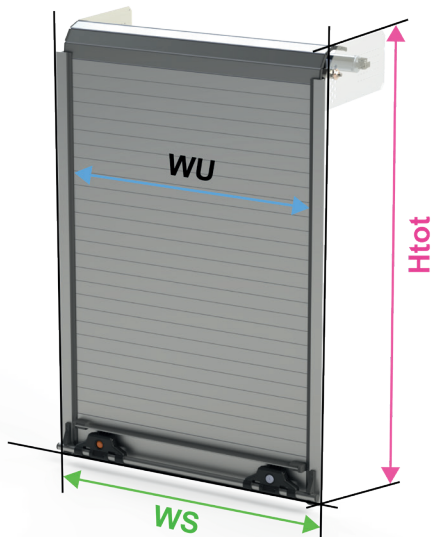


### Installation

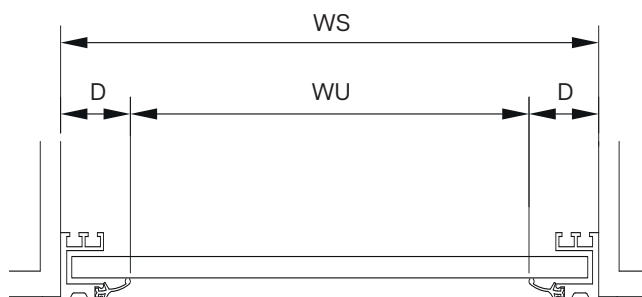
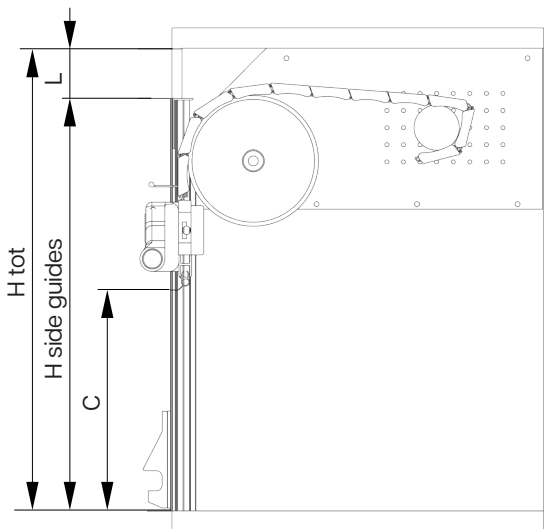
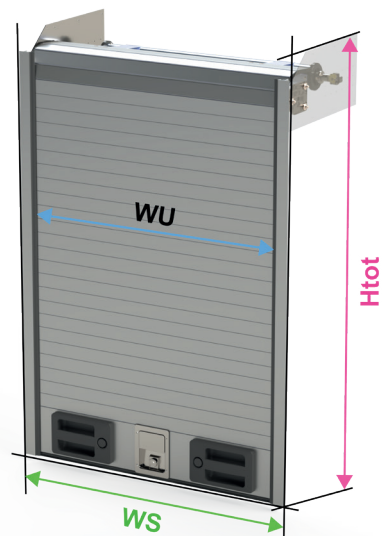
- Mounting on cross bar (horizontal) or side guide (vertical)
- Side drilling required during installation (horizontal kit)

# HOW TO MEASURE YOUR ROLLER SHUTTER

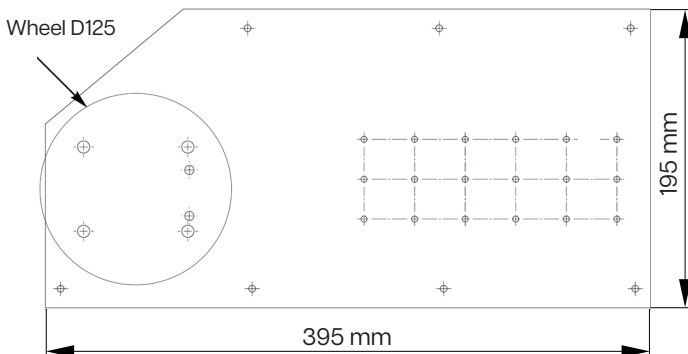
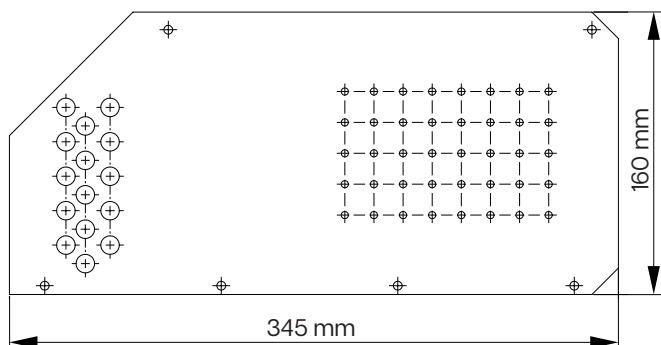
## SRS TOP



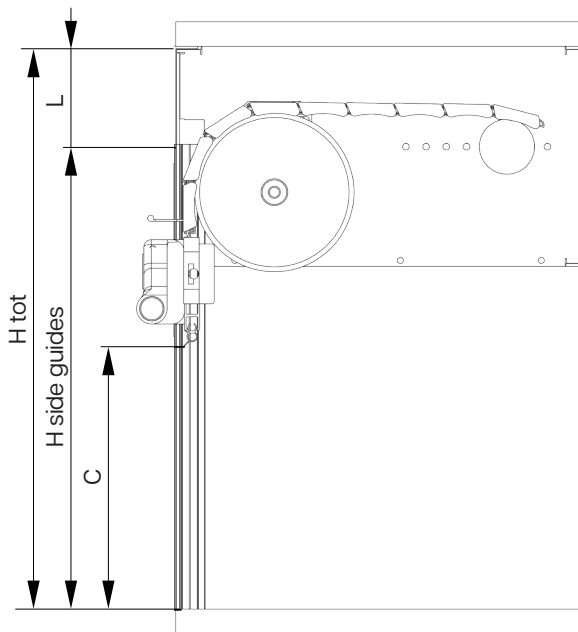
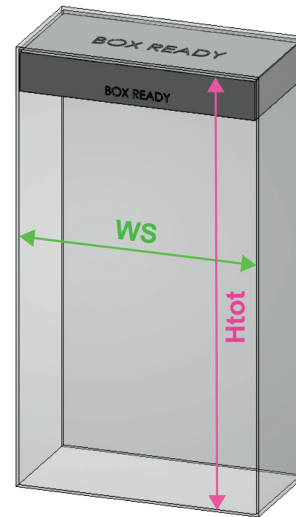
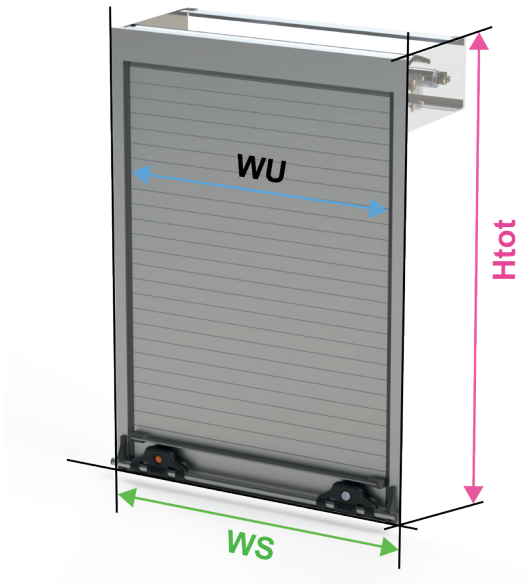
## SRS TOP XL



\*The **measurements** and **fixing plates** from the **SRS TOP** are used for the **SRS TOP-E**

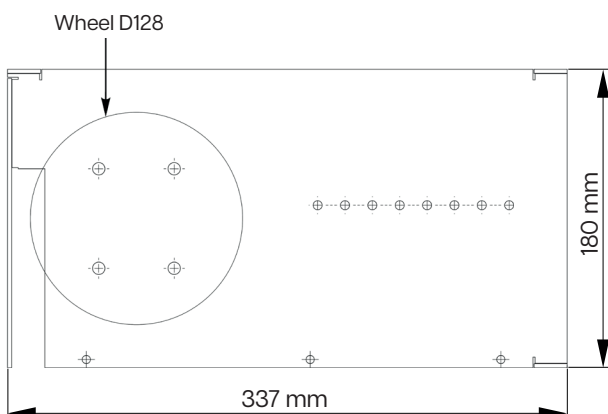


## SRS TOP READY



### Fixing plate for **MP1** and **MP5**

\*NOTE: In order to produce this shutter, the compartment must have precise dimensions because the tolerance is low, almost zero. A 3D or 2D drawing is valuable.



Measurements	
<b>H tot</b>	Total height
<b>H guides</b>	Side guides height
<b>WU</b>	Light width
<b>WS</b>	Total width
<b>L</b>	Sliding room
<b>C</b>	Light height
<b>D</b>	Guide and gasket edge







**+39 030 2677496**

**info@serenaproduction.it**

**www.serenaproduction.it**

**www.srs-shutters.com**

Via Benedetto Castelli 46  
25010, Montirone, Brescia, Italia

