

ALUMINIUM ROLLER SHUTTERS

FOR SPECIAL VEHICLES



SRS
ROLLER SHUTTERS



03

SRS TOP-E

SRS *TOP -E* STANDARD SERENA MOTOR

SRS *TOP -E* TUBULAR MOTOR

Electric roller shutter designed for **enhanced operator convenience.**

Custom-built using extruded aluminium H38 profiles, the TOP-E series combines technical design with **advanced functionality.**

Ideal for special vehicle applications, it is equipped with a compact, low-power electric motor, available in Standard SERENA or Tubular motor versions (12V, 24V, or 230V).

The **TOP-E system offers maximum versatility**, reliable performance, and reduced installation space, making it particularly suitable for vehicle compartments where efficiency and ease of operation are essential.

An electric solution specifically designed to **simplify the operator's work**, ensuring **fast and effortless opening and closing operations.**

Order form

SRS TOP E





ALFA ROMEO
PROTECTOR

CTB

70

80

CTB

SRS TOP-E

SRS TOP-E “STANDARD SERENA MOTOR”

The **TOP -E** roller shutter with **STANDARD SERENA MOTOR**, featuring the H38 profile, is designed for large openings and special applications.

The **STANDARD SERENA MOTOR** is designed to deliver **powerful and reliable operation** for roller shutter systems requiring higher torque and durability.

Its robust mechanical construction ensures **long service life** and dependable performance in demanding professional environments.

Key Features

- High torque output
- Gear reduction transmission
- Strong and durable construction
- Suitable for intensive use
- Easy access for maintenance

Applications

Industrial shutters, heavy-duty installations, and professional equipment.

Standard Serena motor Specifications

- 12V: 20 Nm / 12 rpm – Lifting capacity: **70 kg** with emergency system
- 24V: 20 Nm / 12 rpm – Lifting capacity: **70 kg** with emergency system

Each **SRS TOP -E** roller shutter is supplied in separate components to allow simple and fast on-site assembly:

- 1 pre-assembled shutter complete with closing system (without lock), profile with fixing straps for connection to the winding roll
- 1 pair of vertical side guides
- 1 pre-tensioned Ø45 mm winding roll
- 1 box with motor,
- 1 accessory kit with mounting screws and hardware
- Additional options available on request

RECOMMENDED DIMENSIONS

2000 mm

MAX. WIDTH

2500 mm

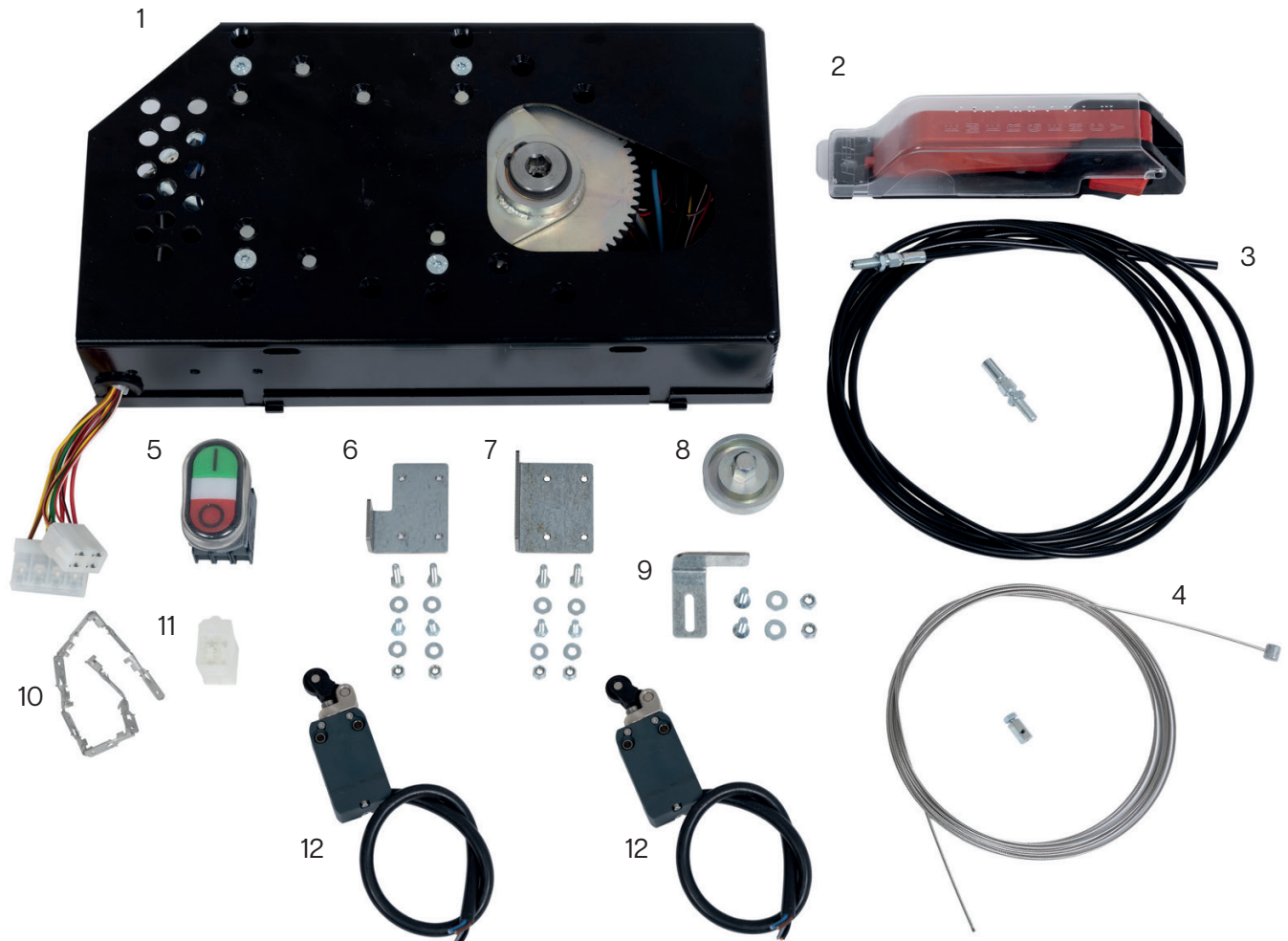
MAX. HEIGHT

5 m²

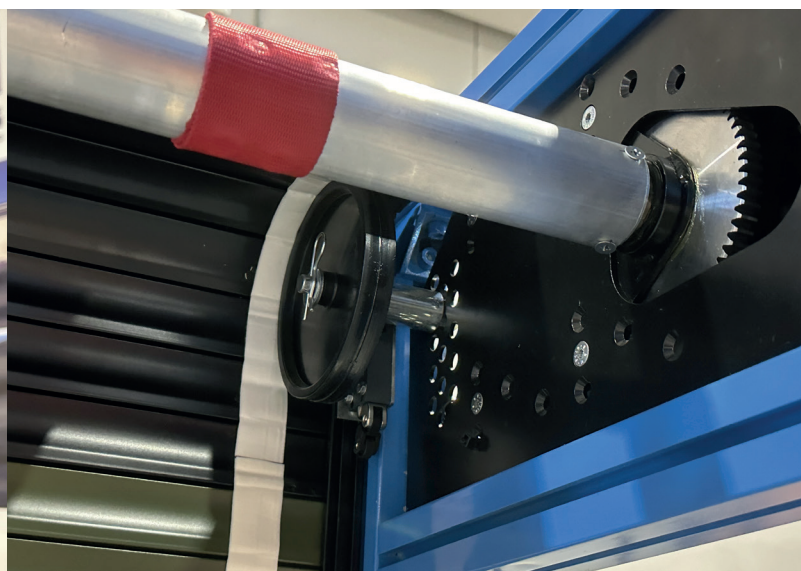
MAX. RECOMMENDED SURFACE AREA



	12v No Radio	24v No Radio
Lifting capacity @20Nm	70Kg	70Kg
Emergency system	Yes	Yes
Remote control	No	No



1	Motor + carter	5	Button	9	Microswitch lever drive
2	Handle release	6	Upper microswitch support	10	PIN
3	Cable release	7	Lower microswitch support	11	Connector
4	Membrane	8	Roller cap with hexagonal pin	12	Microswitch



SRS TOP-E “TUBULAR MOTOR”

The **TOP -E** roller shutter with **TUBULAR MOTOR**, featuring the H38 profile, is designed for special applications

The TUBULAR MOTOR is a compact and reliable solution for the automation of roller shutters installed on vehicles and professional equipment. Designed to be integrated inside the winding roll, it ensures a **space-saving installation** while maintaining high operational efficiency.

Its quiet operation and protected internal structure guarantee **smooth and consistent movement** even under frequent use. The integrated adjustable limit switch system allows **precise control of opening and closing positions**, improving safety and durability.

Key Features

- Compact integrated design
- Easy installation inside the roller tube
- Quiet and smooth operation
- Adjustable limit switch system
- Reliable performance over time

Applications

Service vehicles, equipped vans, mobile workshops, and professional installations.

Tubular motor specifications

- 12V – 20 Nm / 12 rpm: Lifting capacity: **30 kg** with emergency system
- 24V – 35 Nm / 12 rpm: Lifting capacity: **55 kg** without emergency system
- 230V – 30 / 50 / 80 / 100 / 120 Nm / 12 rpm: Capacity: 56/ 95/ 120 / 150 / 180 kg –with or without emergency system and remote control

Standard Serena motor Specifications

Each **SRS TOP -E** roller shutter is supplied in separate components to allow simple and fast on-site assembly:

- 1 pre-assembled shutter complete with closing system (without lock), profile with fixing straps for connection to the winding roll
- 1 pair of vertical side guides
- 1 winding roll
- 1 box with motor, + 1 accessory kit with mounting screws and hardware
- Additional options available on request

RECOMMENDED DIMENSIONS

3000 mm

MAX. WIDTH

2800 mm

MAX. HEIGHT

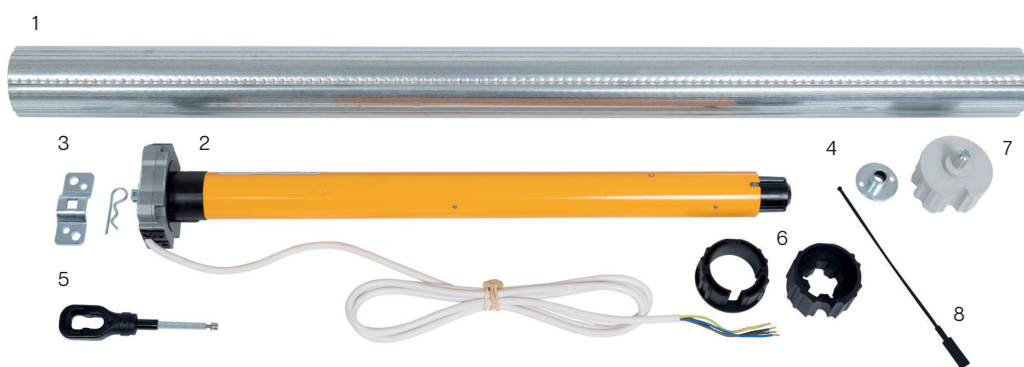
8 m²

MAX. RECOMMENDED SURFACE AREA

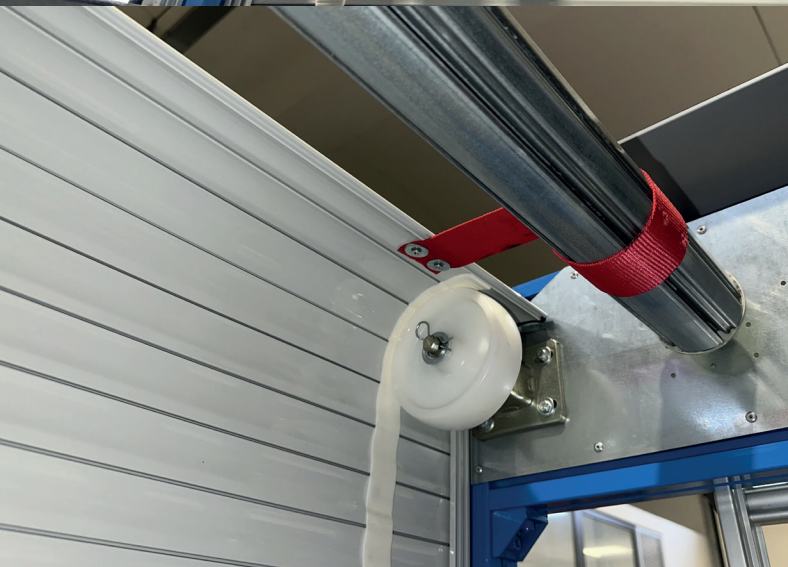


	12v	24v
Lifting capacity @20Nm	30Kg	n.a.
Lifting capacity @35Nm	n.a.	55Kg
Emergency system	Yes	No

	12v No Radio	24v No Radio
Lifting capacity @30/50/80/100Nm	56/96/120/150Kg	56/96/120/150Kg
Emergency system	Yes	Yes
Wireless remote control + cover	No	Yes
Selector with key	Yes	No
Button	Yes	No



1	Zinc coated roll
2	Motor
3	Right roll support
4	Left roll support
5	Buttonhole
6	Adapters
7	Cap
8	PIN



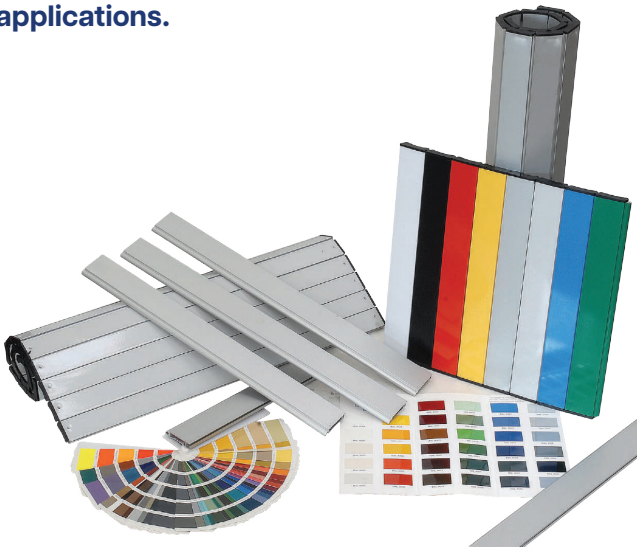
FINISHING

Description

Made from **high-quality extruded aluminium**, the profiles used in SRS roller shutters feature an optimized cross-section to ensure **superior mechanical performance**.

Available in standard satin silver anodized finish or RAL 7035 powder coating, both providing **outstanding corrosion resistance and durability over time**. Profile heights range from 30 mm to 38 mm, depending on installation requirements.

Upon request, powder coating can be applied in over 150 RAL colors for **fully customized applications**.



GUIDES

Several guide profiles are available, optimized according to the SRS shutter model

Seven different guide profiles are available, each specifically designed and optimized for the various SRS roller shutter models. Every guide profile is engineered to ensure:

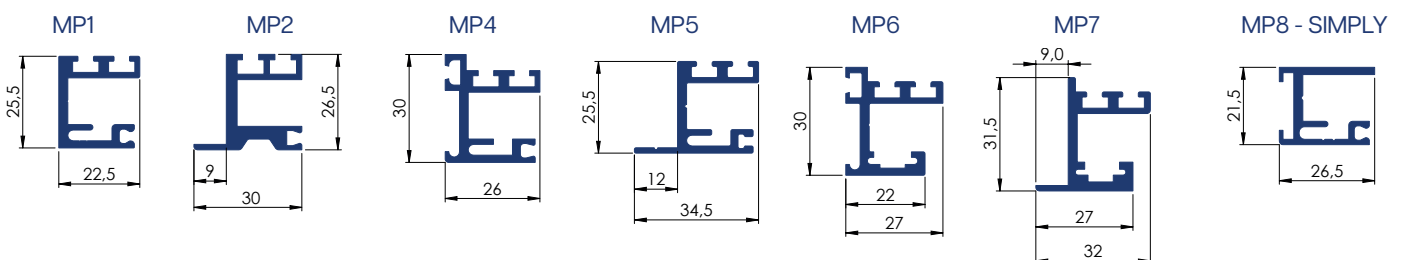
- Smooth and reliable shutter movement
- Optimal sealing, thanks to one or two integrated rubber gaskets
- Full compatibility with dedicated accessories and locking systems

Guide profiles can also be supplied pre-machined, including milled or curved versions, to meet **specific installation or design requirements.**

This wide range of guide profiles allows the SRS system to adapt to different installation configurations while maintaining **high levels of performance, reliability, and durability.**



	MP1	MP2	MP4	MP5	MP6	MP7	SIMPLY
TOP	[Solid bar]						
TOP READY	[Solid bar]	[Light bar]	[Light bar]	[Solid bar]	[Light bar]	[Light bar]	[Light bar]
TOP XL	[Solid bar]						
TOP E	[Solid bar]						
ECO	[Solid bar]	[Light bar]	[Light bar]	[Solid bar]	[Light bar]	[Light bar]	[Light bar]
ECO PLUS	[Solid bar]	[Light bar]	[Light bar]	[Solid bar]	[Light bar]	[Light bar]	[Light bar]
ECO SIMPLY	[Light bar]	[Light bar]	[Light bar]	[Light bar]	[Light bar]	[Light bar]	[Solid bar]
ECO PLUS SIMPLY	[Light bar]	[Light bar]	[Light bar]	[Light bar]	[Light bar]	[Light bar]	[Solid bar]



CLOSING SYSTEMS

SRS roller shutters are equipped with a range of locking systems selected according to the shutter model to ensure **optimal performance**.

Available in both key-operated and keyless versions, they are manufactured from high-strength extruded aluminium, combined with metal components and engineered plastics, ensuring an excellent balance of **robustness, reliability, and long service life**.

All systems feature an **automatic locking function**: the shutter securely locks when fully lowered, enhancing ease of use and overall safety.

	T1	T2	T3	T4	T5	T8	T9
TOP		■			■		
TOP READY		■			■		
TOP XL			■				
TOP E						■	
ECO	■				■		
ECO PLUS		■			■		
ECO SIMPLY	■				■		
ECO PLUS SIMPLY		■			■		



T1



T2



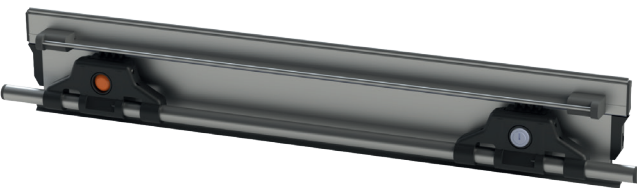
T3



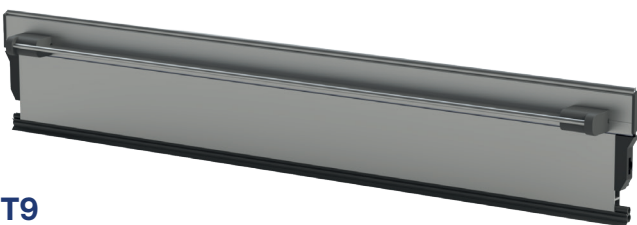
T4



T5



T8



T9



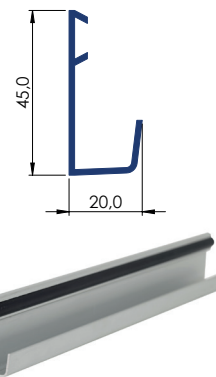
ACCESSORIES

Accessories are a key element in completing and enhancing aluminium roller shutters, improving their **functionality, security, and long-term durability**. This section presents a range of solutions designed to meet a variety of application needs, ensuring **reliability**, ease of use, and seamless integration with every system.

Gutter profiles

Aluminium gutter profiles, available in two sizes, guide the shutter smoothly during operation while **optimising water drainage**. Installed at the top of the compartment, they direct water away from the shutter, preventing leaks and potential damage. The profiles are fixed with screws or rivets in a dedicated groove, hidden by a seal (big gutter profile), **uniform finish**, and are available in different colour options to match the installation.

Big gutter profile



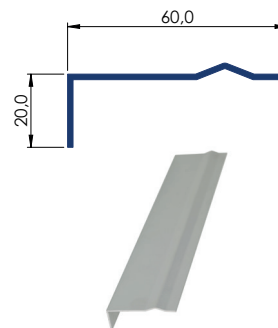
Small gutter profile



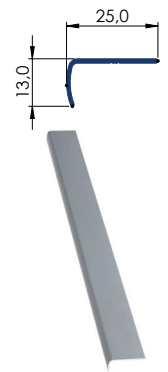
Lower profiles

The aluminium lower profile, available in two sizes, supports the shutter when closed, ensures **proper sealing against dust and water**, protects the bottom edge from wear, and provides a **clean, durable finish**. Available in different colour options.

Big lower profile



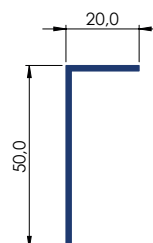
Small lower profile



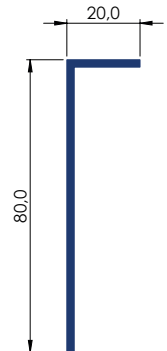
Covers

Protective profiles that protect mechanical components and shutter profiles from **dust, dirt, and moisture**, while providing a **clean, finished appearance** for a durable and tidy installation.

Cover 50x20



Cover 80x20



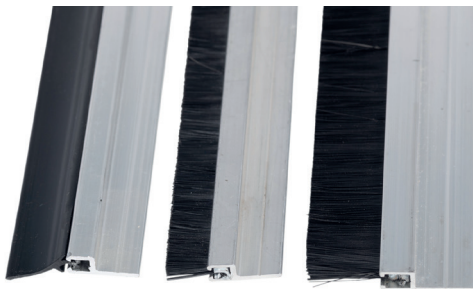
Milled shutter profile with gasket

Milled shutter profile with **integrated gasket**, designed to provide **effective protection against dust, air, and water**.



Aluminium profile with brush

Aluminium profile with **integrated brush or rubber gasket**, mounted at the top of the shutter. It cleans dust and debris during operation, ensuring **smooth movement** and protecting the shutter profiles.



Pulling Belt

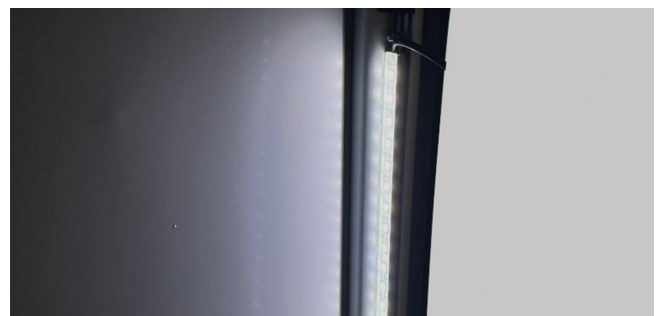
The pulling belt, available in standard or elastic versions, is an **essential accessory** for aluminium shutters installed at high elevations. It allows the shutter to be operated without directly reaching the closing system or grip profile, ensuring **safe and convenient closing**.



Inside LED

12V or 24V **LED** ideal for installation on the side guides. It provides **uniform illumination with low energy consumption**, enhancing visibility and safety during shutter operation.

Measures	S300	S500	S1000
LED quantity	18	30	60
Body	Aluminium	Aluminium	Aluminium
Lens size	500	500	1000
Lens coated	Silicon	Silicon	Silicon
Color intensity	6000K	6000K	6000K



External LED

12v or 24v LED used to illuminate the external and perimeter area. It is supplied in anodized aluminium profile, polycarbonate cover, plastic end caps, mounting clips and rivets.

- **Color intensity:** 6000k ;
- **Operating temperature:** -25°C ~ +40°C ;
- **Max temperature:** 75°C Max
- **Lifetime:** 60,000 h ;
- **IP Rating:** IP65

Dimensions Section: 19 × 19 mm

Max length: 3000 mm

(L 700 mm: Ws < 1000 mm) (L 1000 mm: Ws 1001 – 1299 mm) (L 1300 mm: Ws 1300 – 1600 mm)

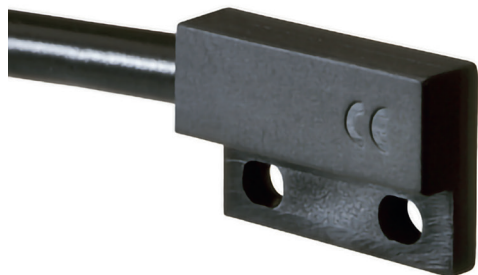
Custom sizes available on request

Ws = shutter opening width



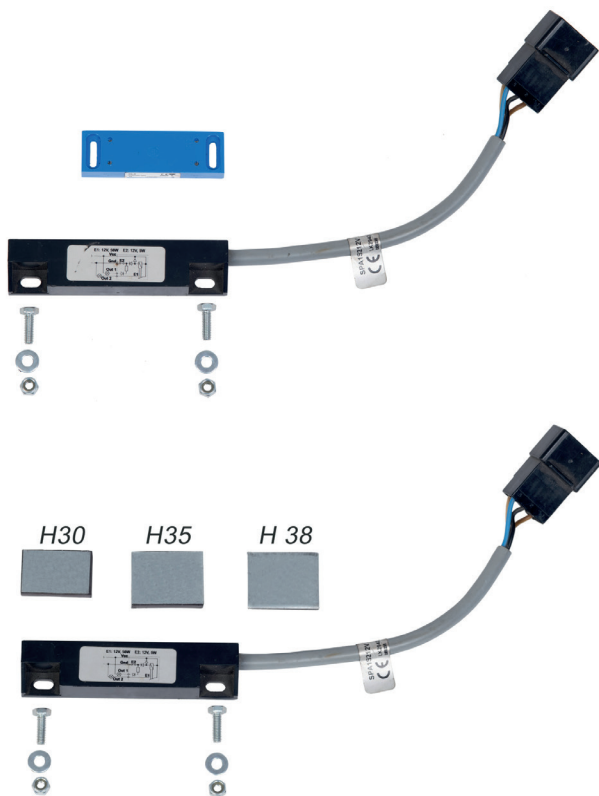
Proximity magnetic sensor 612

Proximity magnetic sensor featuring microminiature Reed contacts; the output function can be normally closed (NC) or normally open (NO). A very **compact sensor**, designed with **highly sensitive contacts and low hysteresis**. Available in 12V or 24V.



Proximity magnetic sensor

Proximity magnetic sensor with a rectangular plastic housing, featuring a normally closed (NC) output. Available with **high-power** output for direct control and **low-power** output for signal applications, ensuring **reliable and versatile performance** across different uses. Available in 12V or 24V.



Electric Locking System 12/24 V

System designed to **automatically lock and unlock roller shutters** without the need for a manual key, featuring electrical control and vehicle integration.

Functions

- Electric locking and unlocking
- Automatic hold in open position
- Control via remote transmitter or RFID technology
- Integration with vehicle central locking system
- Status indication via LED

Available Versions

Horizontal Kit

- 5-wire actuator 12/24V
- Central mounting bracket + cross bar (only on upper part)
- Dedicated shutter profile
- Recommended for shutters up to 1200 mm width



Vertical Side Kit

- 5-wire actuator 12/24V
- Side bracket (RH or LH)
- Dedicated shutter profile
- Recommended for shutters over 1200 mm (double kit suggested)



Control

- Control unit with 1 or 2 TXSP4 remote transmitters
- Control unit with RFID touch control (complete wiring included)



Installation

- Mounting on cross bar (horizontal) or side guide (vertical)
- Side drilling required during installation (horizontal kit)



+39 030 2677496

info@serenaproduction.it

www.serenaproduction.it

www.srs-shutters.com

Via Benedetto Castelli 46
25010, Montirone, Brescia, Italia

