

# ALUMINIUM ROLLER SHUTTERS

FOR SPECIAL VEHICLES



**SRS**  
ROLLER SHUTTERS



# 04

## SRS ECO

SRS *ECO*  
SRS *ECO PLUS*  
SRS *ECO SIMPLY*  
SRS *ECO PLUS SIMPLY*

### Order form

SRS ECO - ECO PLUS



### Order form

SRS ECO SIMPLY - ECO PLUS SIMPLY



**Compact roller shutters** for small – medium sized openings

The **SRS ECO** and **SRS ECO PLUS** aluminium roller shutters are constructed using H30 or H38 profiles and are custom-made to the required height using extruded components with specific technical features. Designed for small-medium sized compartments, they are an **excellent alternative to bulky swing doors**.



# SRS ECO

The **SRS ECO** shutter system features a sliding mechanism that **optimizes space usage** inside the vehicle. When opened, the shutter lies flat horizontally beneath the roof, with any excess length positioned vertically at the rear.

This system is ideal for areas up to 1 m<sup>2</sup>. It offers a **cost-effective and easy-to-install solution** while maintaining the reliability and sleek design typical of all SRS shutters.

Each **SRS ECO** shutter is supplied in separate components to allow simple and fast on-site assembly:

- 1 pre-assembled shutter, complete with closing system (with or without lock)
- 1 pair of vertical side guides
- 1 pair of aluminium curves, available in standard size 300 × 300 mm
- 2 sliding extensions, when required, in different lengths depending on the depth
- 1 accessories box
- Additional options available on request

## MAXIMUM RECOMMENDED AREA

1 m<sup>2</sup>



# SRS *ECO PLUS*

The **SRS ECO PLUS** includes a special Ø45 wrapping roll, pre-configured to match the dimensions of the shutter, along with dedicated guide rails similar to the SRS ECO model.

Once opened, the shutter lays flat under the roof, with any surplus length positioned vertically at the rear. Suitable for openings up to 1.5 m<sup>2</sup>, the SRS ECO PLUS model is characterized by its **reliability**, high-quality construction, and refined design.

Each **SRS ECO PLUS** roller shutter is supplied in separate components to allow simple and fast on-site assembly:

- 1 pre-assembled shutter complete with closing system (with or without lock) , profile with fixing straps for connection to the winding roll
- 1 pair of vertical side guides
- 1 pre-tensioned Ø45 mm winding roll
- 1 pairs of aluminium curves, available in standard size 300 × 300 mm
- 2 sliding extensions, when required, in different lengths depending on the depth
- 1 accessories box
- Additional options available on request

## MAXIMUM RECOMMENDED AREA

# 1,5 m<sup>2</sup>



# SRS *ECO SIMPLY*

The **SRS ECO SIMPLY** shutter system features a sliding mechanism that **optimizes space usage** inside the vehicle. When opened, the shutter lies flat horizontally beneath the roof, with any excess length positioned vertically at the rear.

This system is ideal for areas up to 1 m<sup>2</sup>. It offers a **cost-effective and easy-to-install solution** while maintaining the reliability and sleek design typical of all SRS shutters.

Each **SRS ECO SIMPLY** shutter is supplied in separate components to allow simple and fast on-site assembly:

The system is supplied as an assembly kit to facilitate transport and installation:

- 1 pre-assembled shutter, complete with bottom closing rail (with or without lock)
- 1 pair of SIMPLY vertical side guides
- 1 pair of plastic SIMPLY curves, available in standard size 90 × 185 mm
- 2 sliding extensions, when required, in different lengths depending on the depth
- 1 accessories box
- Additional options available on request

## MAXIMUM RECOMMENDED AREA

1 m<sup>2</sup>



# SRS *ECO PLUS SIMPLY*

The **SRS ECO PLUS SIMPLY** includes a special **Ø45** winding roll, pre-configured to match the dimensions of the shutter, along with dedicated guide rails similar to the SRS ECO SIMPLY model.

Once opened, the shutter lays flat under the roof, with any surplus length positioned vertically at the rear. Suitable for openings up to **1.5 m<sup>2</sup>**, the SRS ECO PLUS SIMPLY model is characterized by its **reliability**, high-quality construction, and refined design.

Each **SRS ECO PLUS SIMPLY** roller shutter is supplied in separate components to allow simple and fast on-site assembly:

- 1 pre-assembled shutter complete with closing system (with or without lock), profile with fixing straps for connection to the winding roll
- 1 pair of SIMPLY vertical side guides
- 1 pre-tensioned Ø45 mm winding roll
- 1 pair of plastic SIMPLY curves, available in standard size 90 × 185 mm
- 2 sliding extensions, when required, in different lengths depending on the depth
- 1 accessories box
- Additional options available on request

## MAXIMUM RECOMMENDED AREA

1,5 m<sup>2</sup>



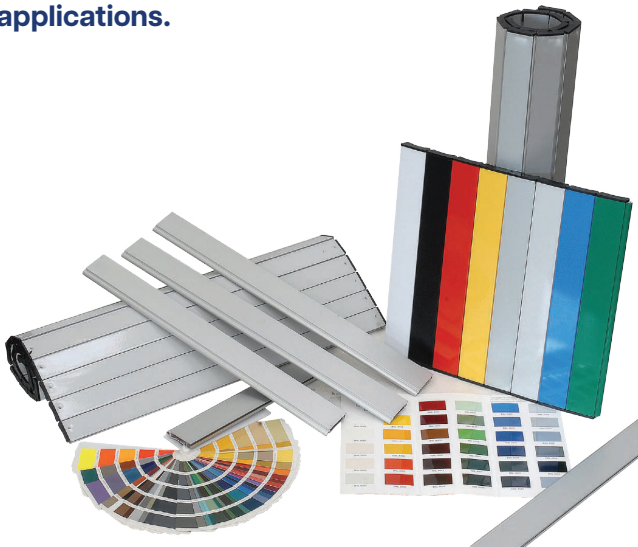
# FINISHING

## Description

Made from **high-quality extruded aluminium**, the profiles used in SRS roller shutters feature an optimized cross-section to ensure **superior mechanical performance**.

Available in standard satin silver anodized finish or RAL 7035 powder coating, both providing **outstanding corrosion resistance and durability over time**. Profile heights range from 30 mm to 38 mm, depending on installation requirements.

Upon request, powder coating can be applied in over 150 RAL colors for **fully customized applications**.



# GUIDES

**Several guide profiles are available, optimized according to the SRS shutter model**

Seven different guide profiles are available, each specifically designed and optimized for the various SRS roller shutter models. Every guide profile is engineered to ensure:

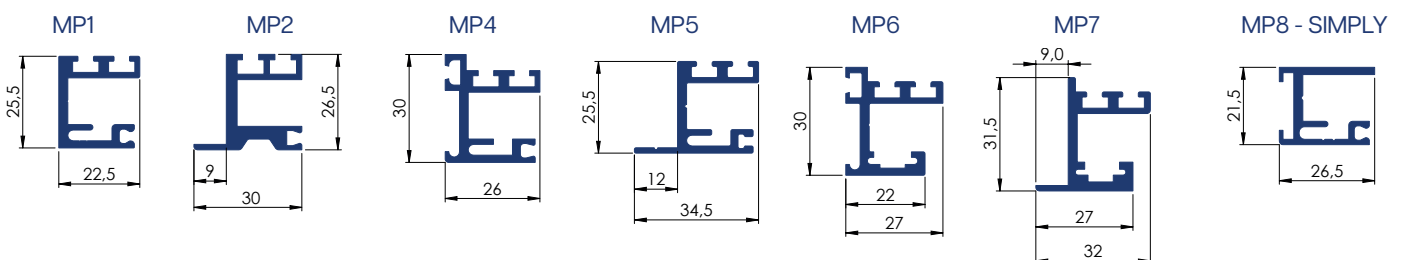
- Smooth and reliable shutter movement
- Optimal sealing, thanks to one or two integrated rubber gaskets
- Full compatibility with dedicated accessories and locking systems

Guide profiles can also be supplied pre-machined, including milled or curved versions, to meet **specific installation or design requirements.**

This wide range of guide profiles allows the SRS system to adapt to different installation configurations while maintaining **high levels of performance, reliability, and durability.**



	MP1	MP2	MP4	MP5	MP6	MP7	SIMPLY
TOP	[Solid bar]						
TOP READY	[Solid bar]	[Light bar]	[Light bar]	[Solid bar]	[Light bar]	[Light bar]	[Light bar]
TOP XL	[Solid bar]						
TOP E	[Solid bar]						
ECO	[Solid bar]	[Light bar]	[Light bar]	[Solid bar]	[Light bar]	[Light bar]	[Light bar]
ECO PLUS	[Solid bar]	[Light bar]	[Light bar]	[Solid bar]	[Light bar]	[Light bar]	[Light bar]
ECO SIMPLY	[Light bar]	[Light bar]	[Light bar]	[Light bar]	[Light bar]	[Light bar]	[Solid bar]
ECO PLUS SIMPLY	[Light bar]	[Light bar]	[Light bar]	[Light bar]	[Light bar]	[Light bar]	[Solid bar]



# CLOSING SYSTEMS

**SRS roller shutters** are equipped with a range of locking systems selected according to the shutter model to ensure **optimal performance**.

Available in both key-operated and keyless versions, they are manufactured from high-strength extruded aluminium, combined with metal components and engineered plastics, ensuring an excellent balance of **robustness, reliability, and long service life**.

All systems feature an **automatic locking function**: the shutter securely locks when fully lowered, enhancing ease of use and overall safety.

	T1	T2	T3	T4	T5	T8	T9
TOP		■			■		
TOP READY		■			■		
TOP XL			■				
TOP E						■	
ECO	■				■		
ECO PLUS		■			■		
ECO SIMPLY	■				■		
ECO PLUS SIMPLY		■			■		



T1



T2



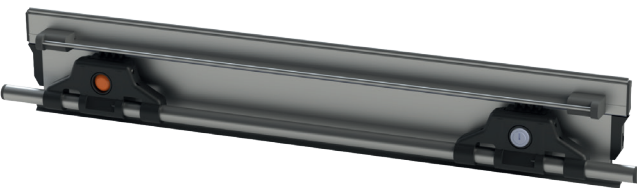
T3



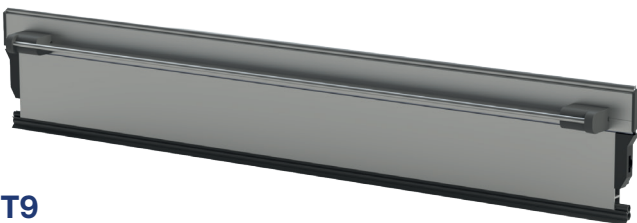
T4



T5



T8



T9



# WINDING ROLLS

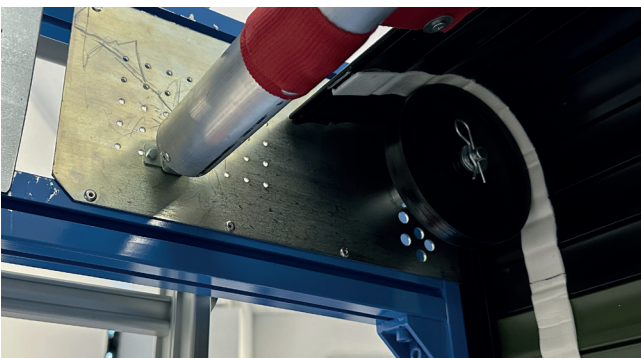
## Aluminium rolls – Ø45 mm and Ø60 mm

Winding rolls are available in Ø45 mm and Ø60 mm diameters, to suit different space, configuration, and load requirements.

Both versions are equipped with **pre-tensioned steel springs**, designed to ensure **high mechanical strength and consistent performance over time**.

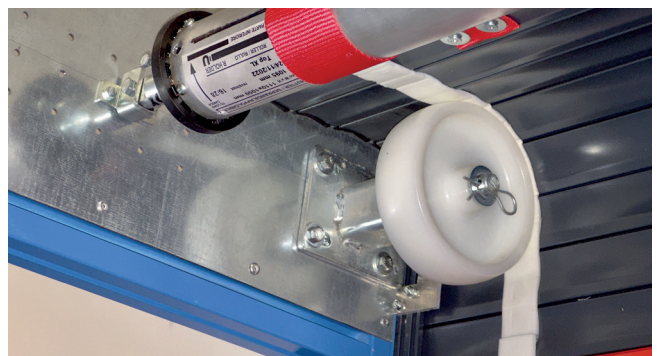
### The Ø45 mm roll

Typically used for TOP shutters, is among the **most compact solutions available on the market**. It significantly reduces the overall size of the shutter when rolled up, making it ideal for **installations with limited space**.



### The Ø60 mm roll

Designed for TOP XL shutters with higher weight, ensures **optimal winding performance** even for large dimensions, providing **stability, reliability, and long-lasting operation**.



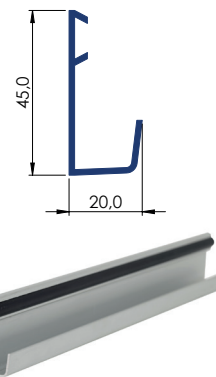
# ACCESSORIES

Accessories are a key element in completing and enhancing aluminium roller shutters, improving their **functionality, security, and long-term durability**. This section presents a range of solutions designed to meet a variety of application needs, ensuring **reliability**, ease of use, and seamless integration with every system.

## Gutter profiles

Aluminium gutter profiles, available in two sizes, guide the shutter smoothly during operation while **optimising water drainage**. Installed at the top of the compartment, they direct water away from the shutter, preventing leaks and potential damage. The profiles are fixed with screws or rivets in a dedicated groove, hidden by a seal (big gutter profile), **uniform finish**, and are available in different colour options to match the installation.

Big gutter profile



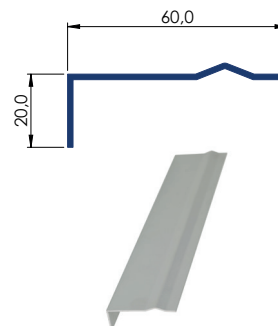
Small gutter profile



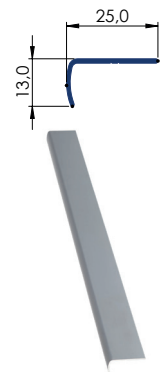
## Lower profiles

The aluminium lower profile, available in two sizes, supports the shutter when closed, ensures **proper sealing against dust and water**, protects the bottom edge from wear, and provides a **clean, durable finish**. Available in different colour options.

Big lower profile



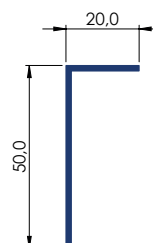
Small lower profile



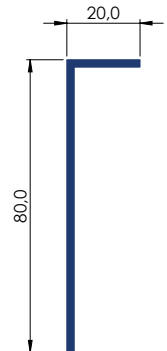
## Covers

Protective profiles that protect mechanical components and shutter profiles from **dust, dirt, and moisture**, while providing a **clean, finished appearance** for a durable and tidy installation.

Cover 50x20



Cover 80x20



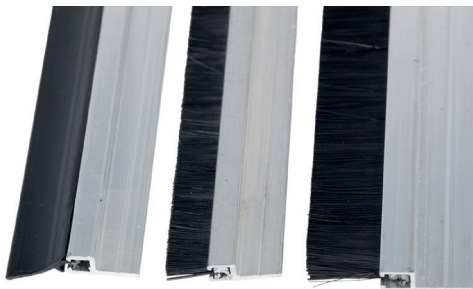
### Milled shutter profile with gasket

Milled shutter profile with **integrated gasket**, designed to provide **effective protection against dust, air, and water**.



### Aluminium profile with brush

Aluminium profile with **integrated brush or rubber gasket**, mounted at the top of the shutter. It cleans dust and debris during operation, ensuring **smooth movement** and protecting the shutter profiles.



### Pulling Belt

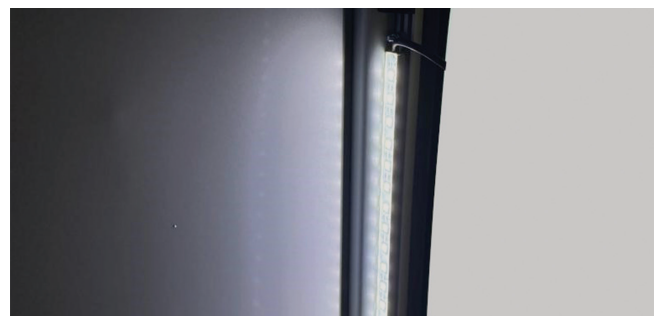
The pulling belt, available in standard or elastic versions, is an **essential accessory** for aluminium shutters installed at high elevations. It allows the shutter to be operated without directly reaching the closing system or grip profile, ensuring **safe and convenient closing**.



### Inside LED

12V or 24V **LED** ideal for installation on the side guides. It provides **uniform illumination with low energy consumption**, enhancing visibility and safety during shutter operation.

Measures	S300	S500	S1000
LED quantity	18	30	60
Body	Aluminium	Aluminium	Aluminium
Lens size	500	500	1000
Lens coated	Silicon	Silicon	Silicon
Color intensity	6000K	6000K	6000K



### External LED

12v or 24v LED used to illuminate the external and perimeter area. It is supplied in anodized aluminium profile, polycarbonate cover, plastic end caps, mounting clips and rivets.

- **Color intensity:** 6000k ;
- **Operating temperature:** -25°C ~ +40°C ;
- **Max temperature:** 75°C Max
- **Lifetime:** 60,000 h ;
- **IP Rating:** IP65

**Dimensions Section:** 19 × 19 mm

**Max length:** 3000 mm

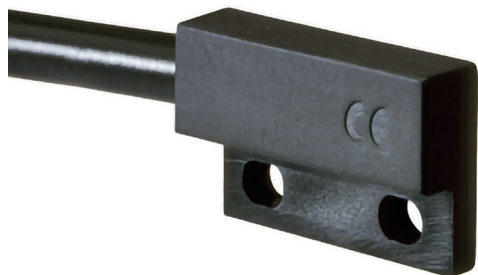
(L 700 mm: Ws < 1000 mm) (L 1000 mm: Ws 1001 – 1299 mm) (L 1300 mm: Ws 1300 – 1600 mm)

Custom sizes available on request  
Ws = shutter opening width



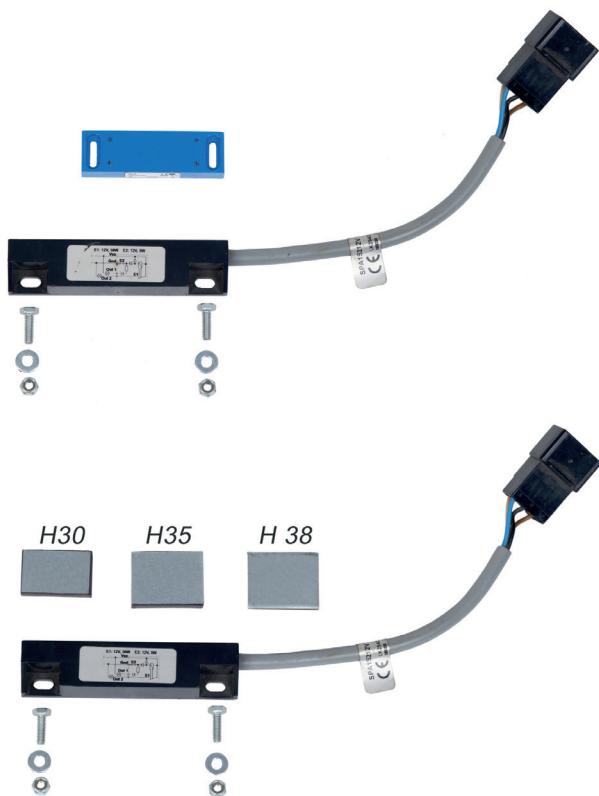
## Proximity magnetic sensor 612

Proximity magnetic sensor featuring microminiature Reed contacts; the output function can be normally closed (NC) or normally open (NO). A very **compact sensor**, designed with **highly sensitive contacts and low hysteresis**. Available in 12V or 24V.



## Proximity magnetic sensor

Proximity magnetic sensor with a rectangular plastic housing, featuring a normally closed (NC) output. Available with **high-power** output for direct control and **low-power** output for signal applications, ensuring **reliable and versatile performance** across different uses. Available in 12V or 24V.



## Electric Locking System 12/24 V

System designed to **automatically lock and unlock roller shutters** without the need for a manual key, featuring electrical control and vehicle integration.

### Functions

- Electric locking and unlocking
- Automatic hold in open position
- Control via remote transmitter or RFID technology
- Integration with vehicle central locking system
- Status indication via LED

### Available Versions

#### Horizontal Kit

- 5-wire actuator 12/24V
- Central mounting bracket + cross bar (only on upper part)
- Dedicated shutter profile
- Recommended for shutters up to 1200 mm width



#### Vertical Side Kit

- 5-wire actuator 12/24V
- Side bracket (RH or LH)
- Dedicated shutter profile
- Recommended for shutters over 1200 mm (double kit suggested)



### Control

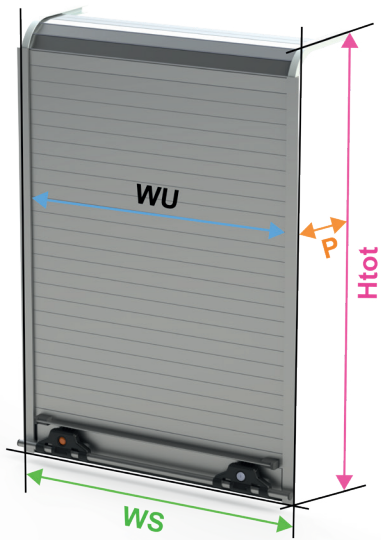
- Control unit with 1 or 2 TXSP4 remote transmitters
- Control unit with RFID touch control (complete wiring included)



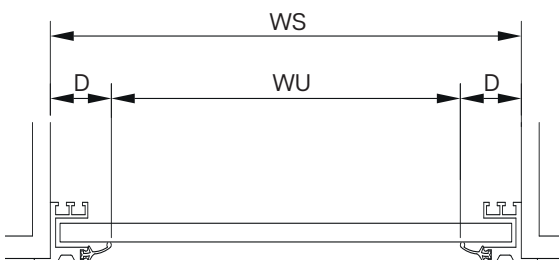
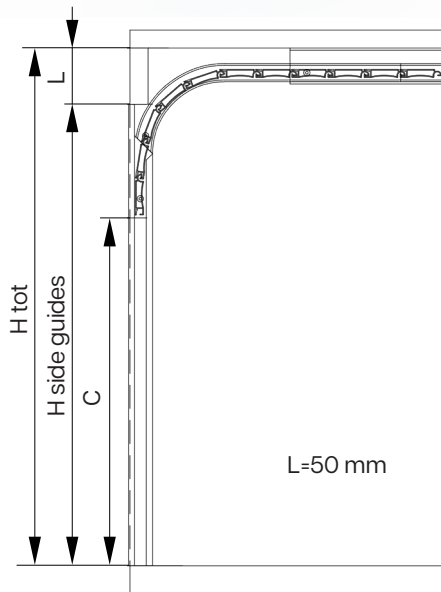
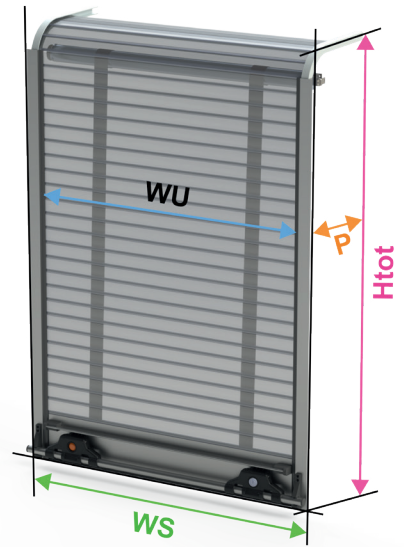
### Installation

- Mounting on cross bar (horizontal) or side guide (vertical)
- Side drilling required during installation (horizontal kit)

## SRS ECO

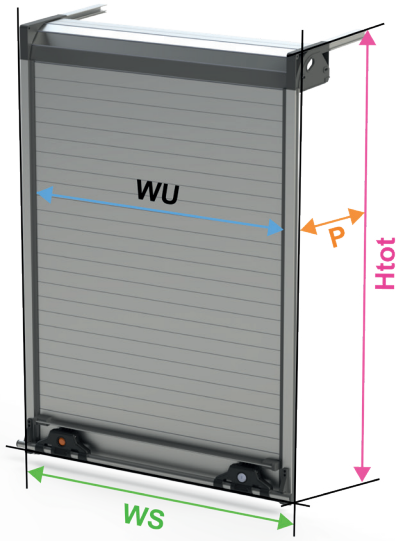


## SRS ECO PLUS

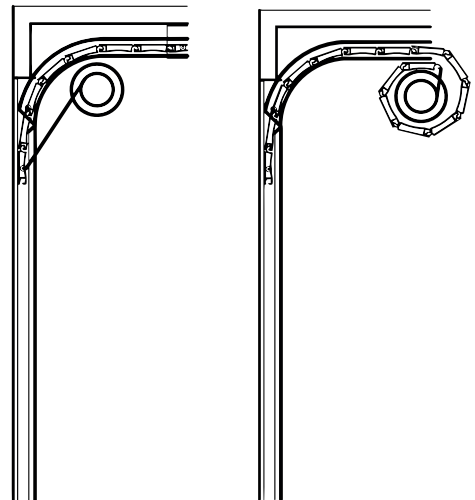
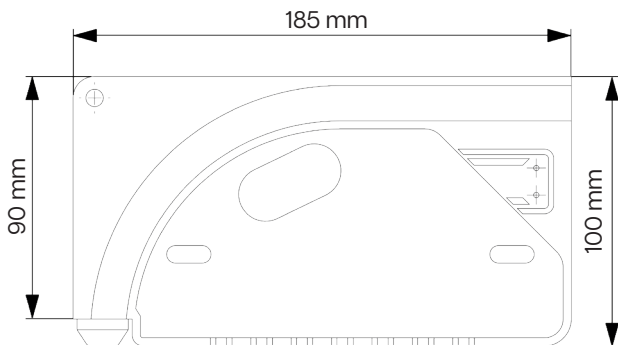
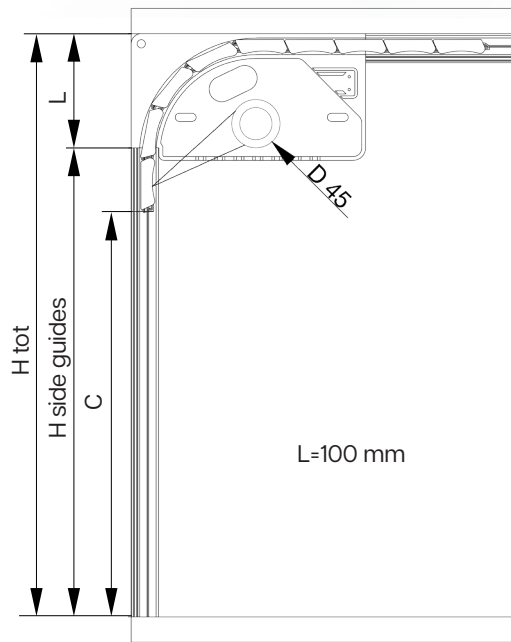
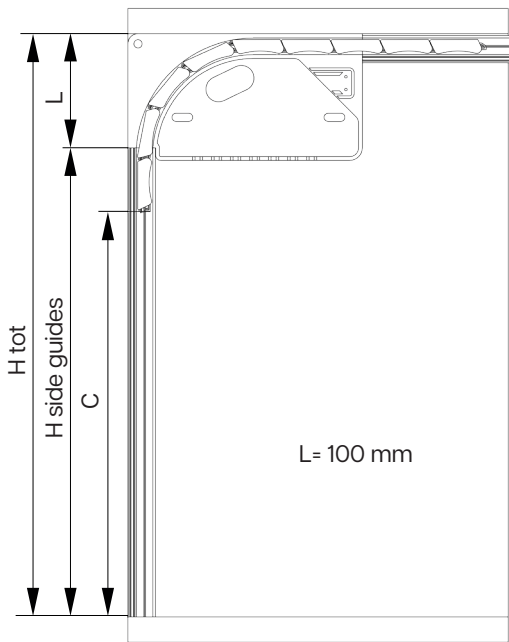
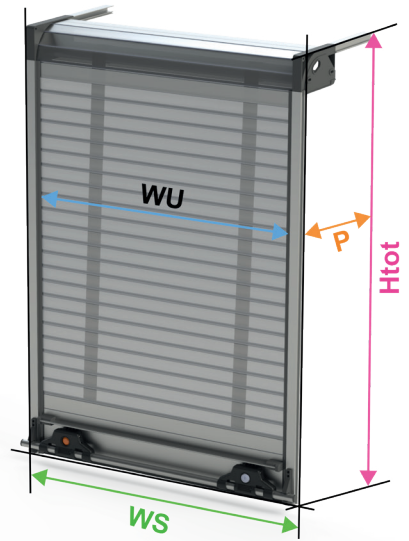


Measurements	
<b>H tot</b>	Total height
<b>H guides</b>	Side guides height
<b>WU</b>	Light width
<b>WS</b>	Total width
<b>L</b>	Sliding room
<b>C</b>	Light height
<b>P</b>	Depth
<b>D</b>	Guide and gasket edge

**SRS ECO SIMPLY**



**SRS ECO SIMPLY PLUS**









**+39 030 2677496**

**info@serenaproduction.it**

**www.serenaproduction.it**

**www.srs-shutters.com**

Via Benedetto Castelli 46  
25010, Montirone, Brescia, Italia

