

ALUMINIUM ROLLER SHUTTERS

FOR SPECIAL VEHICLES



SRS
ROLLER SHUTTERS



HOW TO CHOOSE YOUR ROLLER SHUTTER

1. ROLLER SHUTTER WITH WINDING ROLL OR SLIDING SYSTEM

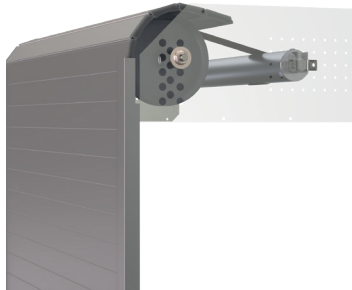
A) Roller Shutter with winding roll

The roller shutter with winding roll wraps around an upper roll when opened. This solution is recommended when:

- The compartment opening is medium or large
- There is sufficient space above the opening for the winding roll
- A robust and versatile solution is required
- The shutter needs to be opened frequently

Main advantages:

- Suitable for large openings
- Highly reliable and well-proven system
- Fast and smooth opening



Recommended for any surface size, especially for larger compartments.

B) ECO Sliding Roller Shutter

The ECO sliding roller shutter does not wind around a roll. Instead, **it slides inside the compartment and is stored under the roof of the compartment**. When fully opened, the shutter remains flat under the roof, while any excess length moves vertically down towards the bottom of the compartment.

This solution is recommended when:

- The compartment opening is small or medium
- Reduced space above the opening is required
- Compact vehicle layouts are being designed

Main advantages:

- Minimal upper space requirement
- Clean and compact design
- Generally lower cost
- Simple installation



Recommended for surfaces up to approximately **1–1.5 m²**.

2. ALUMINIUM PROFILES & FINISHING

SRS roller shutters are manufactured using **high-quality extruded aluminium profiles** specifically designed to ensure **strength, durability, and smooth operation**.

The available profile heights are **H30, H35, and H38**, allowing the system to adapt to different installation requirements. The H38 profile is the most widely used, as its optimized geometry provides an **excellent strength-to-weight ratio** and a lower weight per m², making it particularly suitable for larger shutters.

All profiles are produced from premium extruded aluminium with a carefully engineered cross-section to guarantee **high mechanical performance** and long-term reliability.

Standard finishes include:

- Satin silver anodized aluminium
- RAL 7035 powder coating



These finishes provide **excellent corrosion resistance**, durability, and a clean technical appearance, even in demanding operating environments.

Upon request, powder coating can be supplied in over 150 RAL colors to meet **specific aesthetic or application requirements**.

3. GUIDE PROFILES

Seven different types of guide profiles are available, each optimized according to the specific SRS roller shutter model. Each guide profile is designed to ensure:

- Smooth and reliable sliding
- Optimal sealing, with one or two rubber gaskets
- Full compatibility with dedicated accessories and locking systems

This variety of guide profiles allows the SRS products to adapt to different installation requirements while maintaining **high performance and durability**.

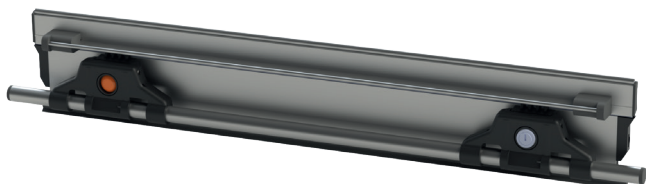


4. CLOSING SYSTEMS

SRS roller shutters are fitted with **carefully engineered closing systems**, selected according to the shutter model to ensure **optimal performance and reliability**.

Available with or without a key, these closing systems are constructed from high-strength extruded aluminium, combined with precision metal and technical plastic components. This combination provides an excellent balance of robustness, durability, and long operational life.

All closing systems feature an **automatic locking function**, which securely locks the shutter when fully lowered, enhancing both ease of use and overall safety.



5. OPTIONAL COMPONENTS & ACCESSORIES

To meet different operational and installation requirements, the **SRS TOP roller shutter system** can be equipped with a wide range of optional components and accessories, including:

- Manual or electric locking systems
- Integrated LED lighting systems
- Magnetic sensors for precise opening and closing detection
- Custom branding, with customer logo application directly on the shutter
- Special sealing kits, featuring gaskets or brush strips for enhanced protection

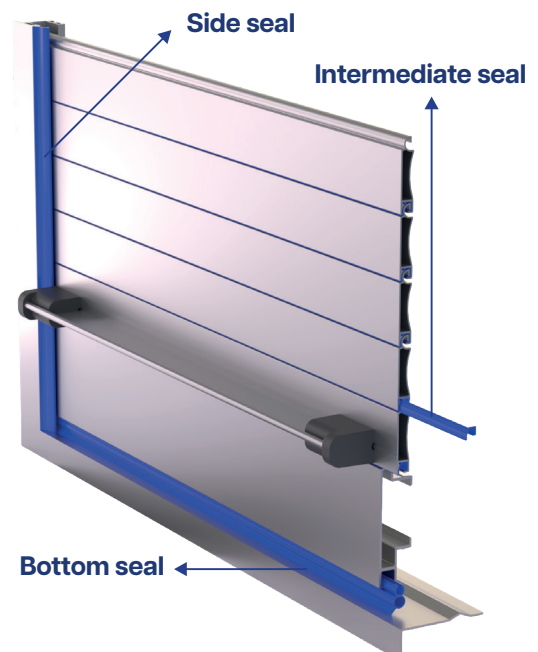
These options allow each shutter to be **fully tailored** to the vehicle layout, operational needs, and aesthetic preferences, ensuring both functionality and style.

GASKETS PROFILE

All SRS shutters are equipped with side, intermediate, and bottom seals—essential elements for ensuring high performance and long service life.

The seals provide excellent protection against water, dust, and air, while also improving thermal and acoustic insulation. In addition, they protect components by reducing vibrations, friction, and wear over time.

The result is a shutter that is more airtight, quieter, reliable, and refined in every detail.



05

CUSTOM MADE

FINISHING
GUIDES
CLOSING SYSTEMS
WINDING ROLLS
ACCESSORIES



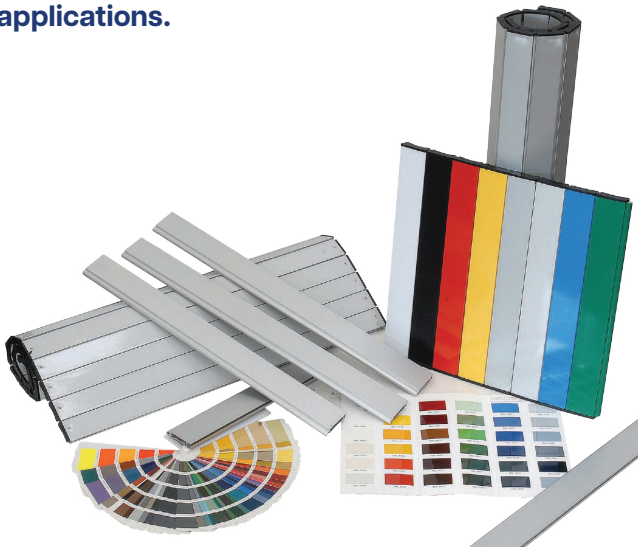
FINISHING

Description

Made from **high-quality extruded aluminium**, the profiles used in SRS roller shutters feature an optimized cross-section to ensure **superior mechanical performance**.

Available in standard satin silver anodized finish or RAL 7035 powder coating, both providing **outstanding corrosion resistance and durability over time**. Profile heights range from 30 mm to 38 mm, depending on installation requirements.

Upon request, powder coating can be applied in over 150 RAL colors for **fully customized applications**.



GUIDES

Several guide profiles are available, optimized according to the SRS shutter model

Seven different guide profiles are available, each specifically designed and optimized for the various SRS roller shutter models. Every guide profile is engineered to ensure:

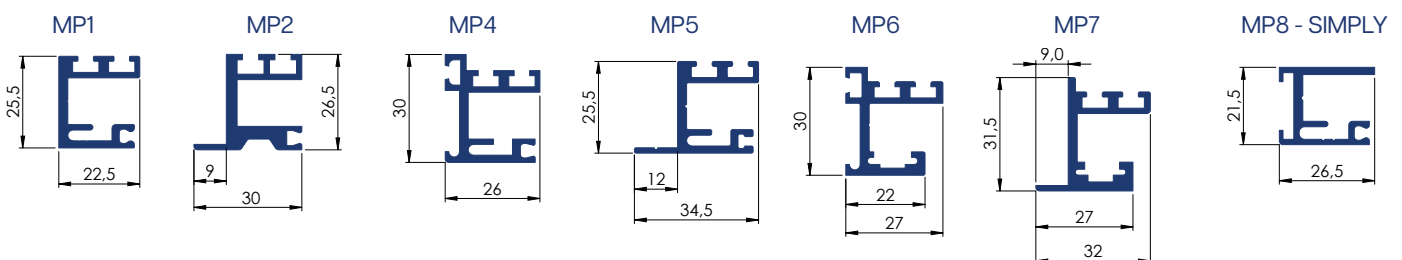
- Smooth and reliable shutter movement
- Optimal sealing, thanks to one or two integrated rubber gaskets
- Full compatibility with dedicated accessories and locking systems

Guide profiles can also be supplied pre-machined, including milled or curved versions, to meet **specific installation or design requirements.**

This wide range of guide profiles allows the SRS system to adapt to different installation configurations while maintaining **high levels of performance, reliability, and durability.**



	MP1	MP2	MP4	MP5	MP6	MP7	SIMPLY
TOP	[Solid dark blue bar]						
TOP READY	[Dark blue bar]	[Light grey bar]	[Dark blue bar]	[Light grey bar]	[Dark blue bar]	[Light grey bar]	[Light grey bar]
TOP XL	[Solid dark blue bar]						
TOP E	[Solid dark blue bar]						
ECO	[Dark blue bar]	[Light grey bar]	[Dark blue bar]	[Light grey bar]	[Dark blue bar]	[Light grey bar]	[Light grey bar]
ECO PLUS	[Dark blue bar]	[Light grey bar]	[Dark blue bar]	[Light grey bar]	[Dark blue bar]	[Light grey bar]	[Light grey bar]
ECO SIMPLY	[Light grey bar]						[Dark blue bar]
ECO PLUS SIMPLY	[Light grey bar]						[Dark blue bar]



CLOSING SYSTEMS

SRS roller shutters are equipped with a range of locking systems selected according to the shutter model to ensure **optimal performance**.

Available in both key-operated and keyless versions, they are manufactured from high-strength extruded aluminium, combined with metal components and engineered plastics, ensuring an excellent balance of **robustness, reliability, and long service life**.

All systems feature an **automatic locking function**: the shutter securely locks when fully lowered, enhancing ease of use and overall safety.

	T1	T2	T3	T4	T5	T8	T9
TOP	—	—	—	—	—	—	—
TOP READY	—	—	—	—	—	—	—
TOP XL	—	—	—	—	—	—	—
TOP E	—	—	—	—	—	—	—
ECO	—	—	—	—	—	—	—
ECO PLUS	—	—	—	—	—	—	—
ECO SIMPLY	—	—	—	—	—	—	—
ECO PLUS SIMPLY	—	—	—	—	—	—	—



T1



T2



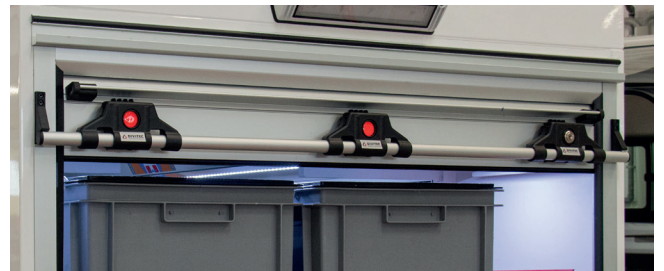
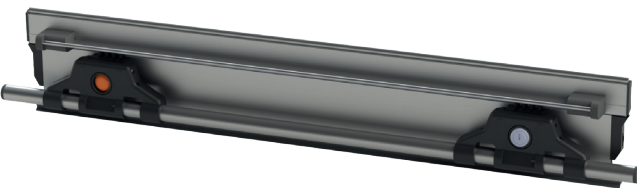
T3



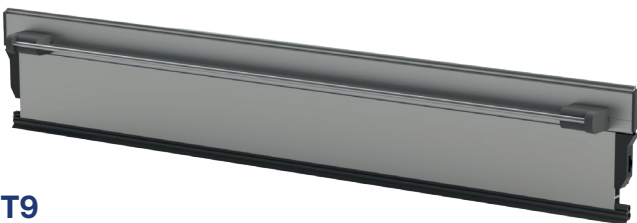
T4



T5



T8



T9



WINDING ROLLS

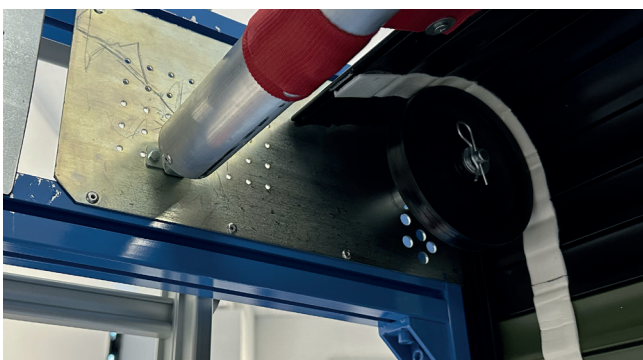
Aluminium rolls – Ø45 mm and Ø60 mm

Winding rolls are available in Ø45 mm and Ø60 mm diameters, to suit different space, configuration, and load requirements.

Both versions are equipped with **pre-tensioned steel springs**, designed to ensure **high mechanical strength and consistent performance over time**.

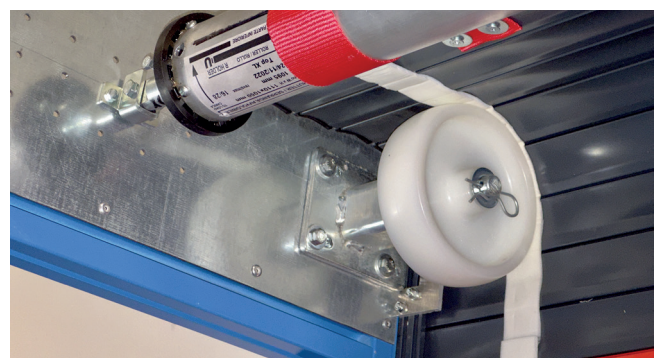
The Ø45 mm roll

Typically used for TOP shutters, is among the **most compact solutions available on the market**. It significantly reduces the overall size of the shutter when rolled up, making it ideal for **installations with limited space**.



The Ø60 mm roll

Designed for TOP XL shutters with higher weight, ensures **optimal winding performance** even for large dimensions, providing **stability, reliability, and long-lasting operation**.



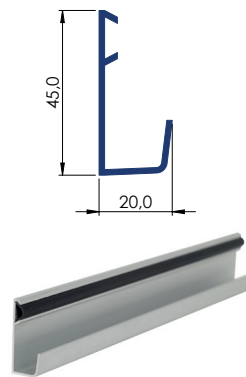
ACCESSORIES

Accessories are a key element in completing and enhancing aluminium roller shutters, improving their **functionality, security, and long-term durability**. This section presents a range of solutions designed to meet a variety of application needs, ensuring **reliability**, ease of use, and seamless integration with every system.

Gutter profiles

Aluminium gutter profiles, available in two sizes, guide the shutter smoothly during operation while **optimising water drainage**. Installed at the top of the compartment, they direct water away from the shutter, preventing leaks and potential damage. The profiles are fixed with screws or rivets in a dedicated groove, hidden by a seal (big gutter profile), **uniform finish**, and are available in different colour options to match the installation.

Big gutter profile



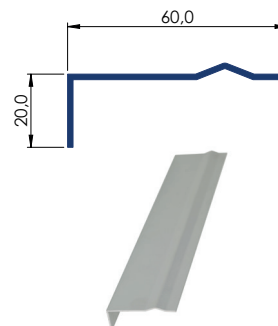
Small gutter profile



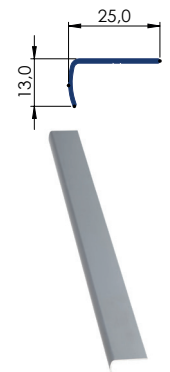
Lower profiles

The aluminium lower profile, available in two sizes, supports the shutter when closed, ensures **proper sealing against dust and water**, protects the bottom edge from wear, and provides a **clean, durable finish**. Available in different colour options.

Big lower profile



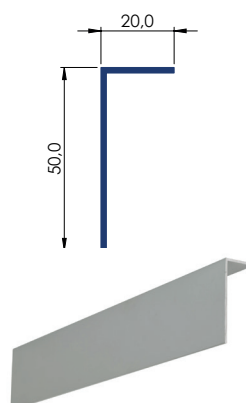
Small lower profile



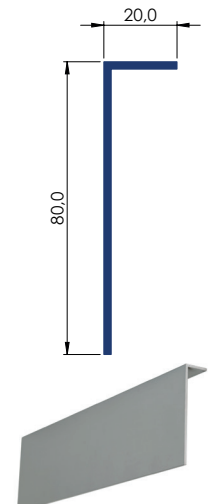
Covers

Protective profiles that protect mechanical components and shutter profiles from **dust, dirt, and moisture**, while providing a **clean, finished appearance** for a durable and tidy installation.

Cover 50x20



Cover 80x20



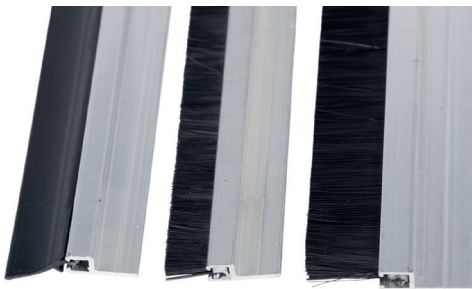
Milled shutter profile with gasket

Milled shutter profile with **integrated gasket**, designed to provide **effective protection against dust, air, and water**.



Aluminium profile with brush

Aluminium profile with **integrated brush or rubber gasket**, mounted at the top of the shutter. It cleans dust and debris during operation, ensuring **smooth movement** and protecting the shutter profiles.



Pulling Belt

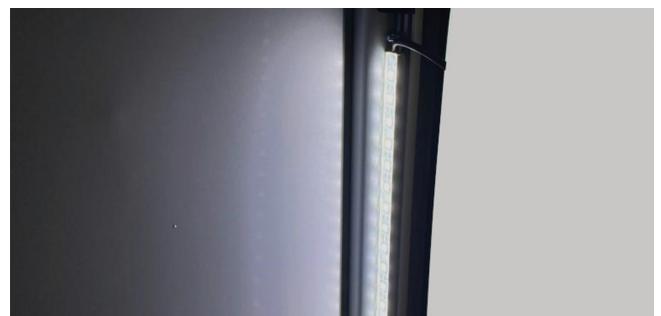
The pulling belt, available in standard or elastic versions, is an **essential accessory** for aluminium shutters installed at high elevations. It allows the shutter to be operated without directly reaching the closing system or grip profile, ensuring **safe and convenient closing**.



Inside LED

12V or 24V **LED** ideal for installation on the side guides. It provides **uniform illumination with low energy consumption**, enhancing visibility and safety during shutter operation.

Measures	S300	S500	S1000
LED quantity	18	30	60
Body	Aluminium	Aluminium	Aluminium
Lens size	500	500	1000
Lens coated	Silicon	Silicon	Silicon
Color intensity	6000K	6000K	6000K



External LED

12v or 24v LED used to illuminate the external and perimeter area. It is supplied in anodized aluminium profile, polycarbonate cover, plastic end caps, mounting clips and rivets.

- **Color intensity:** 6000k ;
- **Operating temperature:** -25°C ~ +40°C ;
- **Max temperature:** 75°C Max
- **Lifetime:** 60,000 h ;
- **IP Rating:** IP65

Dimensions Section: 19 × 19 mm

Max length: 3000 mm

(L 700 mm: Ws < 1000 mm) (L 1000 mm: Ws 1001 – 1299 mm) (L 1300 mm: Ws 1300 – 1600 mm)

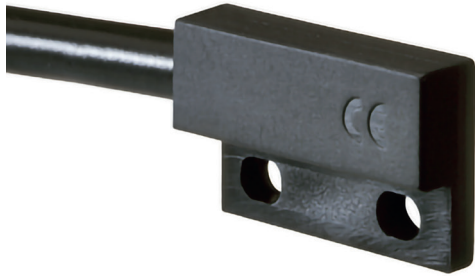
Custom sizes available on request

Ws = shutter opening width



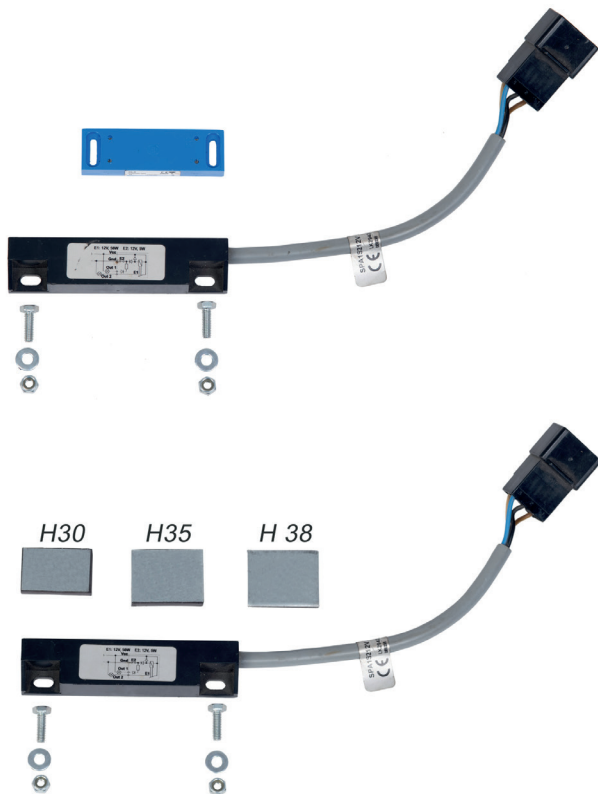
Proximity magnetic sensor 612

Proximity magnetic sensor featuring microminiature Reed contacts; the output function can be normally closed (NC) or normally open (NO). A very **compact sensor**, designed with **highly sensitive contacts and low hysteresis**. Available in 12V or 24V.



Proximity magnetic sensor

Proximity magnetic sensor with a rectangular plastic housing, featuring a normally closed (NC) output. Available with **high-power** output for direct control and **low-power** output for signal applications, ensuring **reliable and versatile performance** across different uses. Available in 12V or 24V.



Electric Locking System 12/24 V

System designed to **automatically lock and unlock roller shutters** without the need for a manual key, featuring electrical control and vehicle integration.

Functions

- Electric locking and unlocking
- Automatic hold in open position
- Control via remote transmitter or RFID technology
- Integration with vehicle central locking system
- Status indication via LED

Available Versions

Horizontal Kit

- 5-wire actuator 12/24V
- Central mounting bracket + cross bar (only on upper part)
- Dedicated shutter profile
- Recommended for shutters up to 1200 mm width



Vertical Side Kit

- 5-wire actuator 12/24V
- Side bracket (RH or LH)
- Dedicated shutter profile
- Recommended for shutters over 1200 mm (double kit suggested)



Control

- Control unit with 1 or 2 TXSP4 remote transmitters
- Control unit with RFID touch control (complete wiring included)



Installation

- Mounting on cross bar (horizontal) or side guide (vertical)
- Side drilling required during installation (horizontal kit)







+39 030 2677496

info@serenaproduction.it

www.serenaproduction.it

www.srs-shutters.com

Via Benedetto Castelli 46
25010, Montirone, Brescia, Italia

