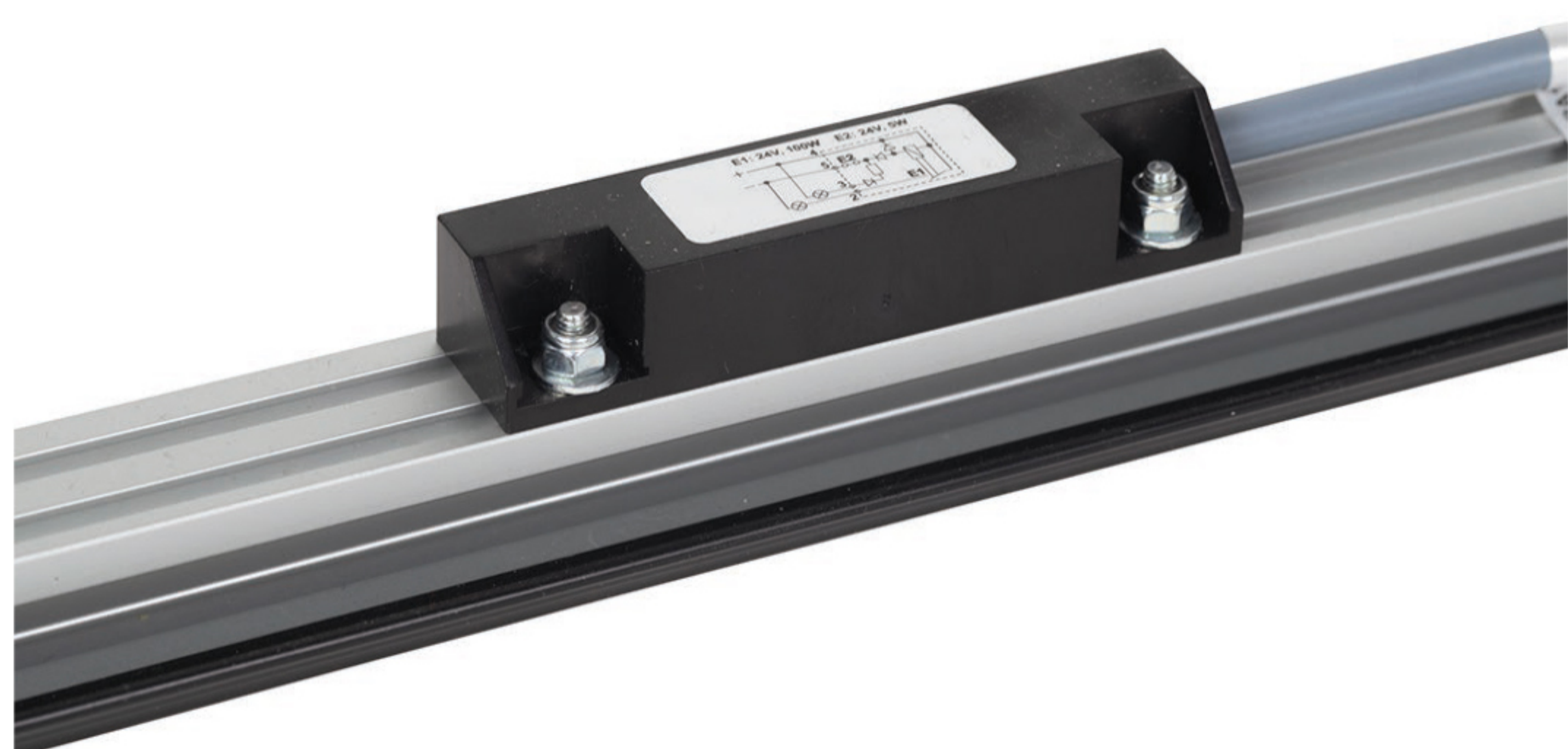
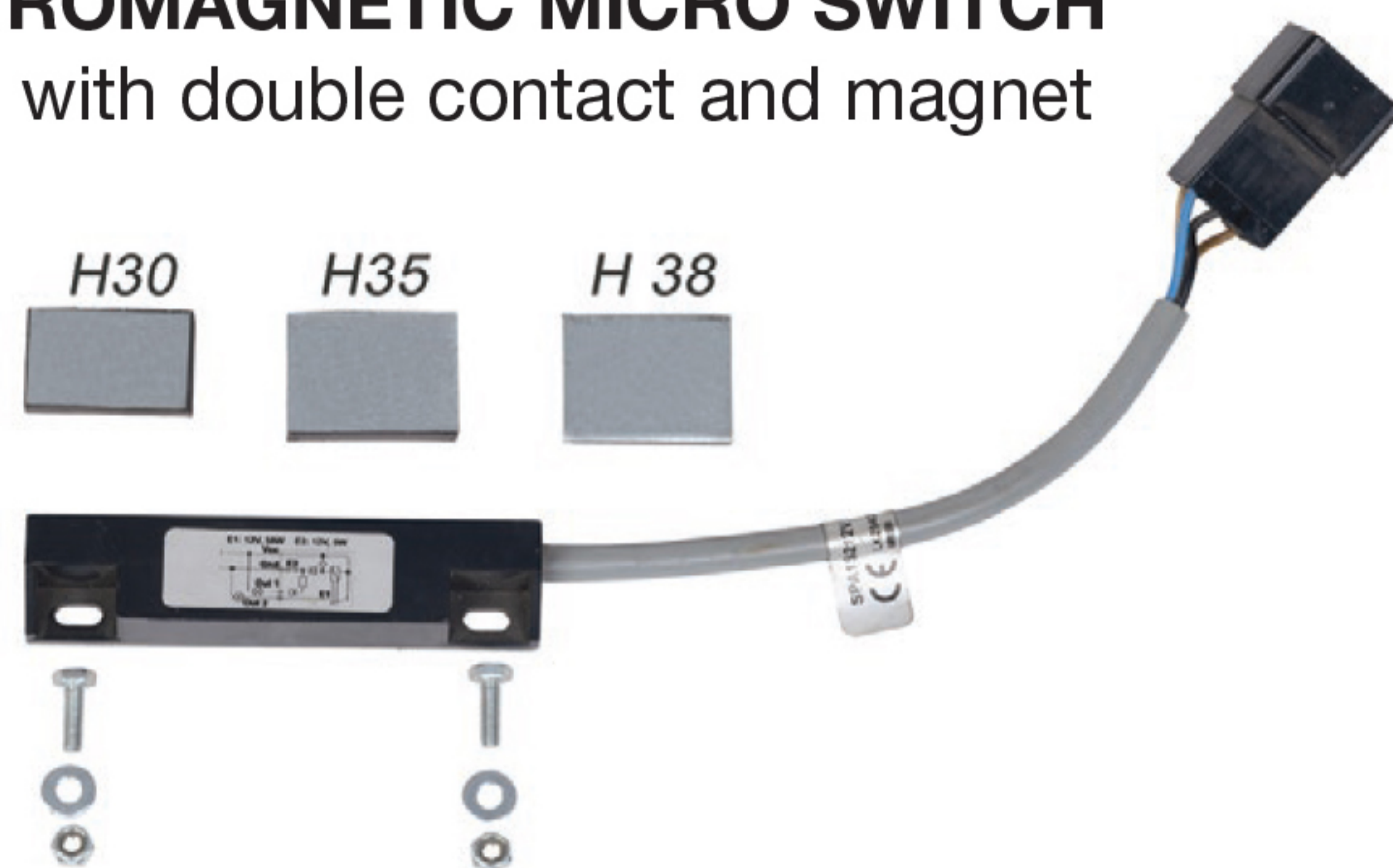


ACCESSORIES

There are many different available types of accessories.



ELECTROMAGNETIC MICRO SWITCH
12/24V with double contact and magnet



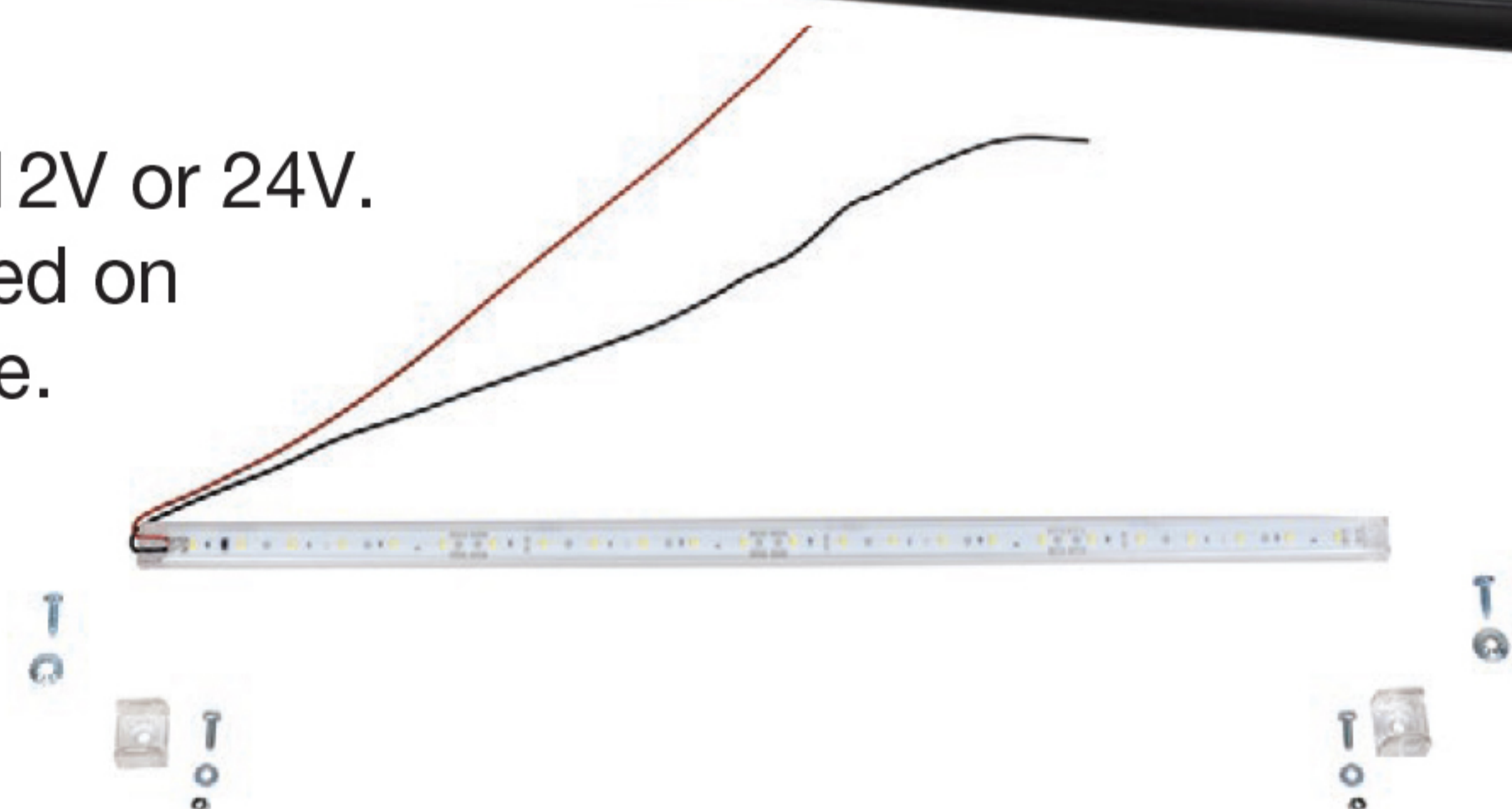
PULLING BELT

Pulling belt can be supplied customized according to roller shutters dimensions and it can be in standard or elastic version.



LED

LED can be supplied in 12V or 24V.
Usually it is mounted on the guide profile.



ELECTRIC LOCKING MECHANISM

